



April 5, 2019

The Honorable Secretary Pete K. Rahn  
Secretary of Transportation  
Maryland Department of Transportation  
7201 Corporate Center Drive  
Hanover, Maryland 21076



**RE: 2019 MDOT Tour Meeting**  
**Board of County Commissioners Transportation Priorities**

Dear Secretary Rahn:

On behalf of the Board of County Commissioners of Washington County and the County Administrator, we look forward to your 2019 visit. Please consider these priorities in the upcoming FY2020 to FY2025 Consolidated Transportation Program (CTP) budget for transportation projects.

**Interstate 81 Widening:** The Interstate 81 widening project remains a top priority for Washington County. The project will expand highway capacity to meet freight demand and improve safety, economic development, and mobility. Over 60,000 vehicles, including over 30 percent truck traffic, travel daily on Interstate 81, including 12 percent of the nation's commerce. As you are aware, the County collaborated with MDOT on submission of an INFRA Grant application for Phase 2 Construction and offered a local contribution of \$1 million towards the project if the grant is secured. Underscoring the urgent need for this project, the week before the grant application was submitted, an accident occurred just north of Exit 4 causing all southbound lanes of traffic to be closed for over two hours. Please commit construction funding to the project even if the grant is not secured, as this project is vital to Washington County. The County submitted the project as part of the Chapter 30 Major Transportation Project Scoring System and assigned all the points to this project. Last year this project was ranked 18 of 42 with Montgomery County, Anne Arundel County, Howard County, and Frederick County all having multiple projects ranked ahead of Washington County.

**Interstate 70 and Maryland 65 Interchange Improvements:** MDOT is in the planning phase for the interchange improvements that include the proposed construction of a partial cloverleaf. Construction is scheduled to move forward on the replacement of the Interstate 70 bridges as planned in the CTP. The interchange improvements, not including the bridge replacement project, were identified for planning funding, however no design/engineering or construction funding was included in last year's CTP. The

80 West Baltimore Street | Hagerstown, MD 21740-6003 | P: 240.313.2460 | TDD: 711

[WWW.WASHCO-MD.NET](http://WWW.WASHCO-MD.NET)

County was informed by MDOT after last year's submission that this project is not part of the Chapter 30 Major Transportation Project Scoring System as it is the reconstruction of an existing interchange. Over 80,000 vehicles cross this interchange daily, and traffic will grow substantially upon construction of the proposed developments. The interchange currently serves the Premium Outlets to the north, while several other developments are beginning to build to the south. These interchange improvements, as well as coordination by MDOT for much needed traffic signal synchronization along Maryland 65 in this area, are important to local businesses, citizens, and commuters.

**Highway User Revenue (HUR):** The amount received in Fiscal Year 2019 was larger than last year but is still drastically lower than funding prior to Fiscal Year 2010. The County is in desperate need of this additional funding to support the operations associated with maintaining over 850 miles of road in Washington County. The County is down over \$70 million in HUR funding over the last 10 years. Thank you for your ongoing efforts, and please continue to provide your support in attempting to reestablish these funding levels.

**Aviation Program:** The design has been completed for the terminal facility at the Hagerstown Regional Airport, and construction is anticipated to begin this summer. These improvements will allow greater passenger capacity in our secure area, update many of our aged aesthetics, and improve passenger flow through the terminal. Hagerstown Regional Airport had approximately 50,000 aircraft operations and over 20,000 passengers last year and just added new flights to Myrtle Beach and St. Petersburg. This is in addition to the established flights to Orlando, Pittsburgh, and Baltimore. We also appreciate support of the design and rehabilitation of our primary runway 9/27 that is over 10 years old. The County is also looking to upgrade to new LED lighting fixtures in the future. The County seeks continued funding assistance for the airport marketing plan and Virtual Perimeter Monitoring Security system (VPMS). The VPMS is a phased project, and funding is needed for the next several years.

**Transit Program:** Public demand for transit service and route expansion continues. Transit vehicles have been traveling 500,000 miles annually and last year had over 500,000 passenger trips for the first time. Additional operational funds would serve to expand transit in accordance with the Transportation Development Plan. In recent years, Federal and State operating funds have remained consistently flat, placing the financial deficit burden on local sources of matching requirements. The County provides local match to support the Federal allotment. In Fiscal Year 2019, local County match/over-match dollars fund the subsidy by approximately 34 percent. In Fiscal Year 2020, local County match/over-match will swell by approximately \$250,000, placing the local County match/over-match at approximately 42 percent of the projected net project cost. Transit is requesting consideration for financial relief via an increase in Federal and State funds. These increases are needed to bridge the gap between revenues and expenses associated with expansion of transit related services to rural areas of the County, along with expansion of demand response paratransit service for individuals with disabilities. Additional Federal and State funds would also support staffing at the Transit Transfer Center in downtown Hagerstown.

The Honorable Secretary Pete K. Rahn

April 5, 2019

Page 3

**Sidewalks:** Continue to fund Transportation Alternatives Programs (TAP), which includes the Safe Routes to School (SRTS) Program. The County has successfully utilized SRTS funding and is currently working on a project. SHA District 6 was particularly supportive of these and other sidewalk initiatives. The County also supports SHA pedestrian safety improvements on Dual Highway (US40) and appreciates your support of these pedestrian safety-related projects.

**Railroad Crossings:** The County maintains 37 rail crossings and looks forward to working again with the SHA Railroad Crossing Manager on safety improvements at highway-railroad grade crossings. We have completed 6 upgrades to date in coordination with MDOT.

We look forward to collaboration with your staff on these priorities and on several other local projects this upcoming year, including Eastern Boulevard at MD64 intersection improvements, Crayton Boulevard Extended, Colonel Henry K. Douglas Drive Extended, Professional Boulevard Bridge, and Poffenberger Road Bridges.

Thank you for your support of these important projects and the work MDOT is doing to improve transportation in Washington County. If you have any questions or need additional information before the tour meeting date, please do not hesitate to contact me.

Sincerely,



Scott Hobbs  
Director of Engineering

Enclosures

cc: Board of County Commissioners  
Robert Slocum, County Administrator  
Washington County Delegation Members  
Senator Benjamin Cardin  
Senator Christopher Van Hollen  
Congressman David Trone  
Anthony Crawford, SHA District Engineer  
Rodney Tissue, City Engineer  
Matthew Mullenax, HEPMPO Executive Director

# Priority Interstate 81 Widening

Pennsylvania State Line

## LEGEND

- - Current State Project
- - Proposed Phase II
- - Proposed Phase III
- - Proposed Phase IV
- - Interstate 70
- Municipal Boundaries
- Washington County Boundary
- Economic Development Parks (Industrial Parks)



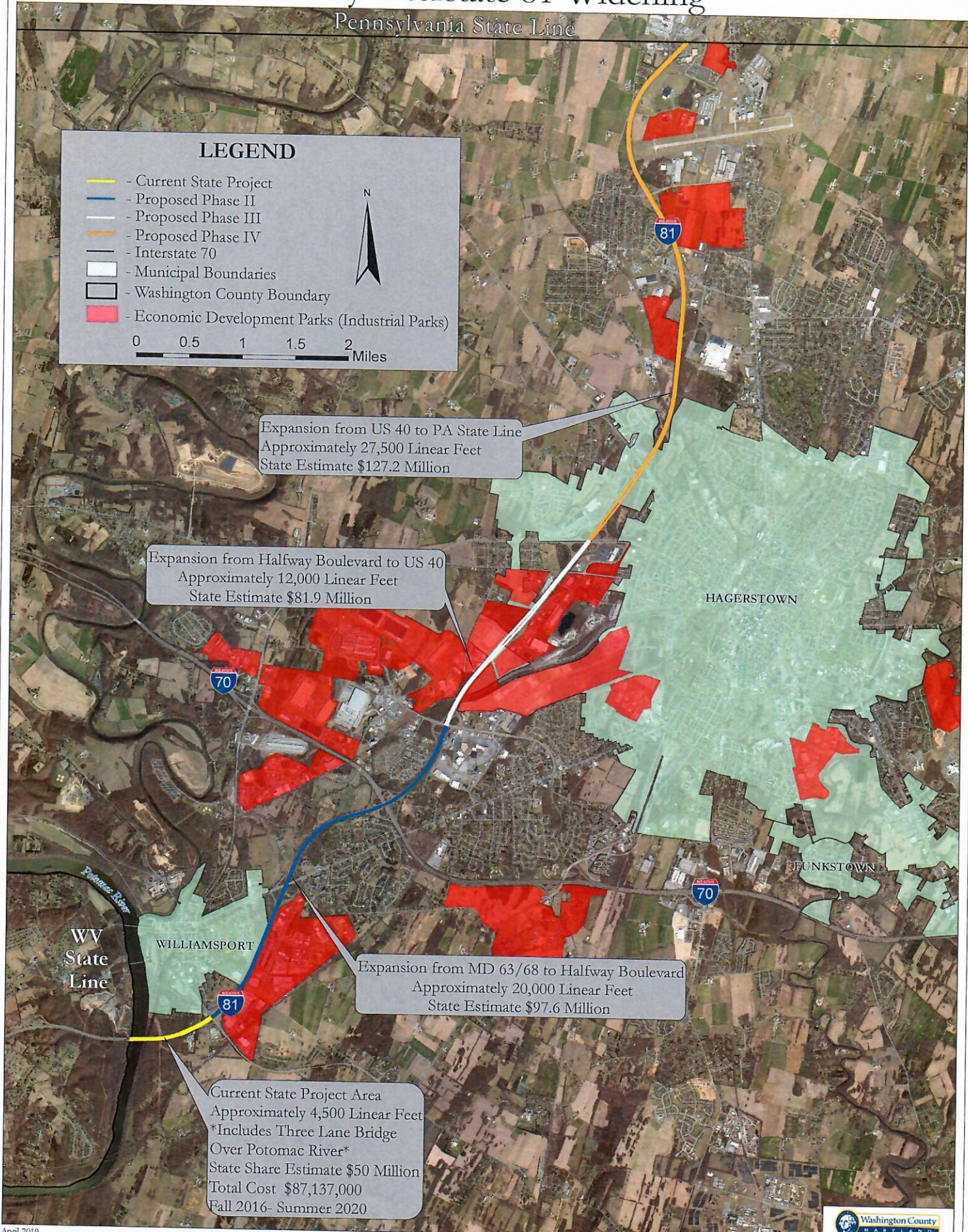
0 0.5 1 1.5 2 Miles

Expansion from US 40 to PA State Line  
 Approximately 27,500 Linear Feet  
 State Estimate \$127.2 Million

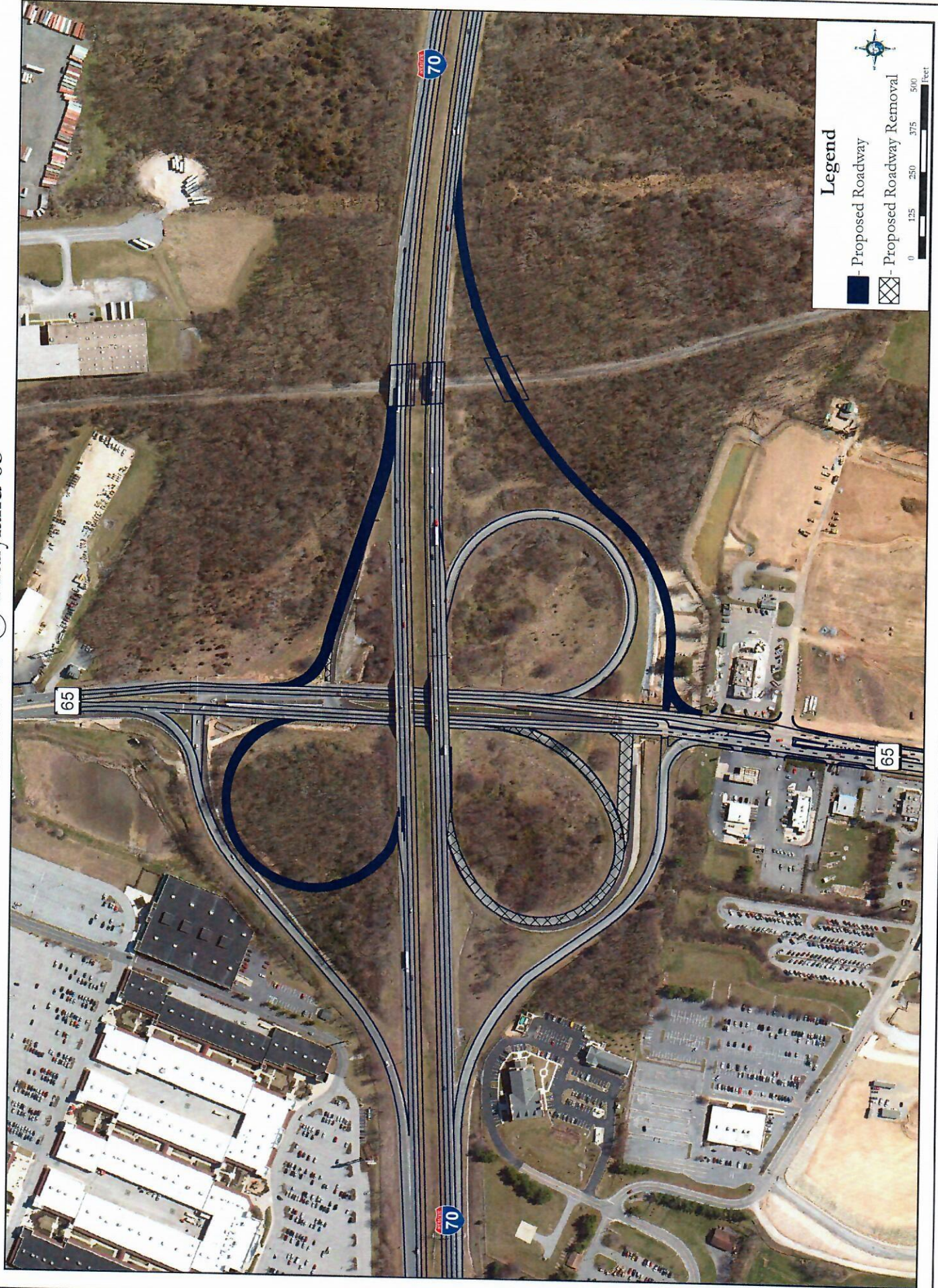
Expansion from Halfway Boulevard to US 40  
 Approximately 12,000 Linear Feet  
 State Estimate \$81.9 Million

Expansion from MD 63/68 to Halfway Boulevard  
 Approximately 20,000 Linear Feet  
 State Estimate \$97.6 Million

Current State Project Area  
 Approximately 4,500 Linear Feet  
 \*Includes Three Lane Bridge  
 Over Potomac River\*  
 State Share Estimate \$50 Million  
 Total Cost \$87,137,000  
 Fall 2016- Summer 2020



# Interstate 70 @ Maryland 65



# Washington County, Maryland

## HIGHWAY USER REVENUE HISTORY

