

Wicomico County
Priority Letter Package
FY 2018 – FY 2023
State of Maryland
Consolidated Transportation Program



WICOMICO COUNTY, MARYLAND

P.O. BOX 870
SALISBURY, MARYLAND 21803-0870
410-548-4801
FAX: 410-548-4803

Bob Culver
County Executive

R. Wayne Strausburg
Director of Administration

October 2, 2017

Pete K. Rahn
Secretary, Maryland Dept. of Transportation
Maryland Department of Transportation
P. O. Box 548
7201 Corporate Center Drive
Hanover, Maryland 21076

Re: Wicomico County Priority Letter – Amended Listing - Recommended Transportation Improvements

Dear ~~Secretary Rahn~~:

PETE

I would like to share a number of recommended transportation improvements in Wicomico County with which we are requesting assistance from the State of Maryland. In accordance with the submittal requirements contained in the Maryland Transportation Code Ann. § 2-103.1, the projects contained in this Priority Letter have been reviewed and endorsed by the County (Executive and Council) via Resolution. A copy of the signed Resolution has been included as part of this submittal.

We have always had an excellent working relationship with the State, and we look forward to future cooperation as we strive to meet the needs of our citizens. As such, the following amended listing of projects and studies are proposed for your consideration to be included as part of the State's FY 2018 – FY 2023 Consolidated Transportation Program (CTP):

SALISBURY-OCEAN CITY: WICOMICO REGIONAL AIRPORT

1. As the second largest commercial airport in the State, the Airport provides a vital service to our region. Continued funding for this essential facility, including funding from the Maryland Aviation Administration's Office of Regional Aviation Assistance and its Airport Improvement Grant Program to develop and implement a robust marketing campaign, advances in technology (STARS – Standard Terminal Automated Replacement System), as well as infrastructure improvements to maintain the current level of service and plan for future demand. Consistent with capital improvements contained in the adopted FY 2018 Wicomico County Capital Improvement Program, the County is requesting financial assistance for the following priority infrastructure improvements to ensure continued commercial operations at this regional facility (See Airport Map #1):

- ◆ Runway 14-32 Extension – Extending the existing 6,400' Runway 14-32 is required to accommodate the performance characteristic of the Embraer ERJ – 145 regional jets and other larger aircraft utilizing the Airport;
- ◆ Taxiway A – Designing and reconstructing Taxiway A, which runs parallel to the Airport's primary runway 14-32. Other improvements include designing and constructing a new air cargo parking apron along this Taxiway;
- ◆ Taxiways F & B – Reconstructing Taxiway B (between Runway 5-23 and Runway 14-32) and a new aircraft parking apron, as well as reconstructing Taxiways F and B (between Taxiway A and E) and providing a new parking apron; and
- ◆ Taxiway C – Rehabilitating Taxiway C Apron (south half) spanning 8 corporate aircraft hangars and 26 T-hangar units. The existing pavement for this segment has deteriorated to a condition requiring rehabilitation. This project will also include associated drainage work.

ROAD and FACILITY IMPROVEMENTS

1. U.S Route 50 and Sixty Foot Road Intersection – Geometric Improvements and Signalization:

Consistent with improvements along U.S. Route 50 at the intersections of Tilghman and Hobbs Roads, the County is encouraged the State Highway Administration is funding construction of geometric improvements and installation of a traffic signal at the U.S. Route 50 and Sixty Foot Road intersection. Any efforts to expedite the procurement of services and construction are greatly appreciated. (See Road and Facility Improvements Map #1).

2. U.S. Route 13 Truck Weigh and Inspection Stations – Relocation:

Over the past 25 years, the State Highway Administration, Office of Traffic and Safety, Motor Carrier Division has sought to replace the existing weigh and inspection stations on both sides of U.S. Route 13, south of its intersect with Winner Boulevard / Connelly Mill Road. A facility replacement is warranted to improve the operations and safety; however, the current location is not preferred. In addition to environmental challenges at the existing site, growth and development in the areas adjacent to the facility has continued to intensify since the weigh and inspection scales were originally constructed. As a result, the weigh station is not compatible with existing and proposed residential and commercial uses in the vicinity.

While the County recognizes and fully supports the importance of providing motor carriers and inspection staff with adequate accommodations to safely conduct daily operations, we are encouraged SHA is identifying an alternative location with less intense development rather than replacing the facility at the existing locations. In addition, as proposed improvements are designed, consideration should be given to incorporating the use of virtual scales to reduce the volume of motor carriers having to enter and exit onto a roadway experiencing high volumes of daily traffic (See Road and Facility Improvements #2).

PLANNING INITIATIVES (Corridor, Intersection, and Feasibility Studies)

1. Salisbury Bypass – Feasibility Planning Study

The County requests the Maryland Department of Transportation to conduct a planning-level feasibility study to prepare and evaluate concepts designed to improve access, reduce weaving / merging between motorists attempting to enter Centre at Salisbury and those accessing northbound U.S. Route 13, performance, and safety of the following interchanges:

- ◆ U.S. Route 50 eastbound and westbound – access Salisbury Bypass (See Planning Initiatives Map #1A).
- ◆ Salisbury Bypass westbound – access to northbound U.S. Route 13 (See Planning Initiatives Map #1B).

2. State Route 12 (Snow Hill Road) and Nutters Cross Road Intersection – Intersection Safety and Traffic Signal Warrant Study:

The County request State consideration to conduct an intersection safety and traffic signal warrant study at the intersection of MD 12 and Nutters Cross Road. Major components of the study, include, but are not limited to the following: documenting existing conditions of the roadway, intersection characteristics, and sight distance; analyze traffic data, crash data, level of service (existing and future conditions), and impact of proposed local development; and conduct a traffic signal warrant analysis. The final report will contain recommendations and planning-level cost estimates to assist SHA with future capital programming considerations (See Planning Initiatives Map #2).

3. U.S. Route 50 – Access Management Study for Wor-Wic Community College:

As a result of increased enrollments, growth and development in surrounding area, as well as construction of new facilities on the Campus, students attending this institution are encountering significant congestion / queuing problems while attempting to exit the Campus heading north on Walston Switch Road. Moreover, because of the moderate queuing problems at the U.S. Route 50 eastbound and Walston Switch Road intersection, motorists are experiencing delays in turning movements to the approach of the freelane access point along Walston Switch Road. This freelane provides a direct access to eastbound U.S. Route 50.

The County commends the efforts of SHA to improve the current conditions at this intersection by implementing the geometric improvements; however, consideration should be given to conducting an access management study to determine if it is feasible to provide Wor-Wic Community College direct egress onto eastbound U.S. Route 50 (See Planning Initiatives Map #3).

PEDESTRIAN IMPROVEMENTS

4. Sidewalk Improvements:

To ensure a safe and connected network of sidewalks between existing residential neighborhoods and major activity generators, including, but not limited to schools, places of worship, commercial / retail areas, public schools, recreational amenities, etc., the County requests SHA to evaluate opportunities to install sidewalks along appropriate segments of State owned or maintained roads.

Due to increased pedestrian activity along the U.S. Route 13 commercial corridor, north of the Bypass, the installation of additional street lighting, audible and countdown pedestrian signals, crosswalks, and other pedestrian amenities are requested for the intersections at Naylor Mill Road, North Point Drive, Dagsboro Road,

and Connelly Mill Road. Additionally, installing a raised median and fence to prevent mid-block pedestrian crossings along U.S. Route 13 Business between E. Main and Church Streets should be considered.

MUNICIPAL REQUESTS

CITY OF SALISBURY

1. Mill Street, Riverside Drive, Camden Avenue, and W. Carroll Street – Construct traffic circle / rotary; (See Municipal Requests Map #1A-Salisbury)
2. U.S. Route 50 – Geometric improvements at Mill Street intersection;
3. Pedestrian and Cyclist Improvements to create a regional bikeway network;
4. Salisbury Bypass – Feasibility planning study, including U.S. Route 13 and 50 intersections with Bypass (See Planning Initiatives Map #1A and #1B).

TOWN OF DELMAR, MD

1. MD 675B– The Town of Delmar, MD, is requesting SHA to conduct a corridor study to evaluate the operational and safety characteristics of signalized and unsignalized intersections located between Connelly Mill Road and State Street (MD 54). The purpose of the study is to recommend several alternative intersection improvements designed to improve safety and reduce congestion, as well as develop preliminary cost estimates for each proposed improvement.

TOWN OF HEBRON

1. U.S. Route 50 Corridor Study – Per the request of the Town of Hebron, consideration should be given to allocate funding to prepare a Corridor Study along U.S. Route 50 extending from the Vienna Bridge to the signalized intersection at U.S. Route 50 and Naylor Mill Road Extended. This proposed study would evaluate the operational and safety characteristics of the signalized and unsignalized intersections under existing conditions, as well as for the identified target years of 2027 and 2037, and provide recommendations with preliminary cost estimates for future capital programming considerations of SHA.

Any assistance from the Maryland Department of Transportation towards the accomplishment of these recommended improvements and planning initiatives is greatly appreciated. Should you require any additional information regarding these improvements, please contact Dallas Baker Jr., P.E., Director, Wicomico County Public Works at (410) 548-4872 or via e-mail Dbaker@wicomicocounty.org.

Respectfully,



Keith D. Hall, AICP
Chief, Long Range and Transportation Planning Section
Salisbury-Wicomico County Dept. of Planning, Zoning, and Community Development

Airport Map #1
Salisbury - Ocean City: Wicomico Regional Airport
14-32 Runway Expansion and Facility Upgrades



**Road and Facility Improvements Map #1
U.S. Route 50 & Sixty Foot Road
Signalization and Geometric Improvements**



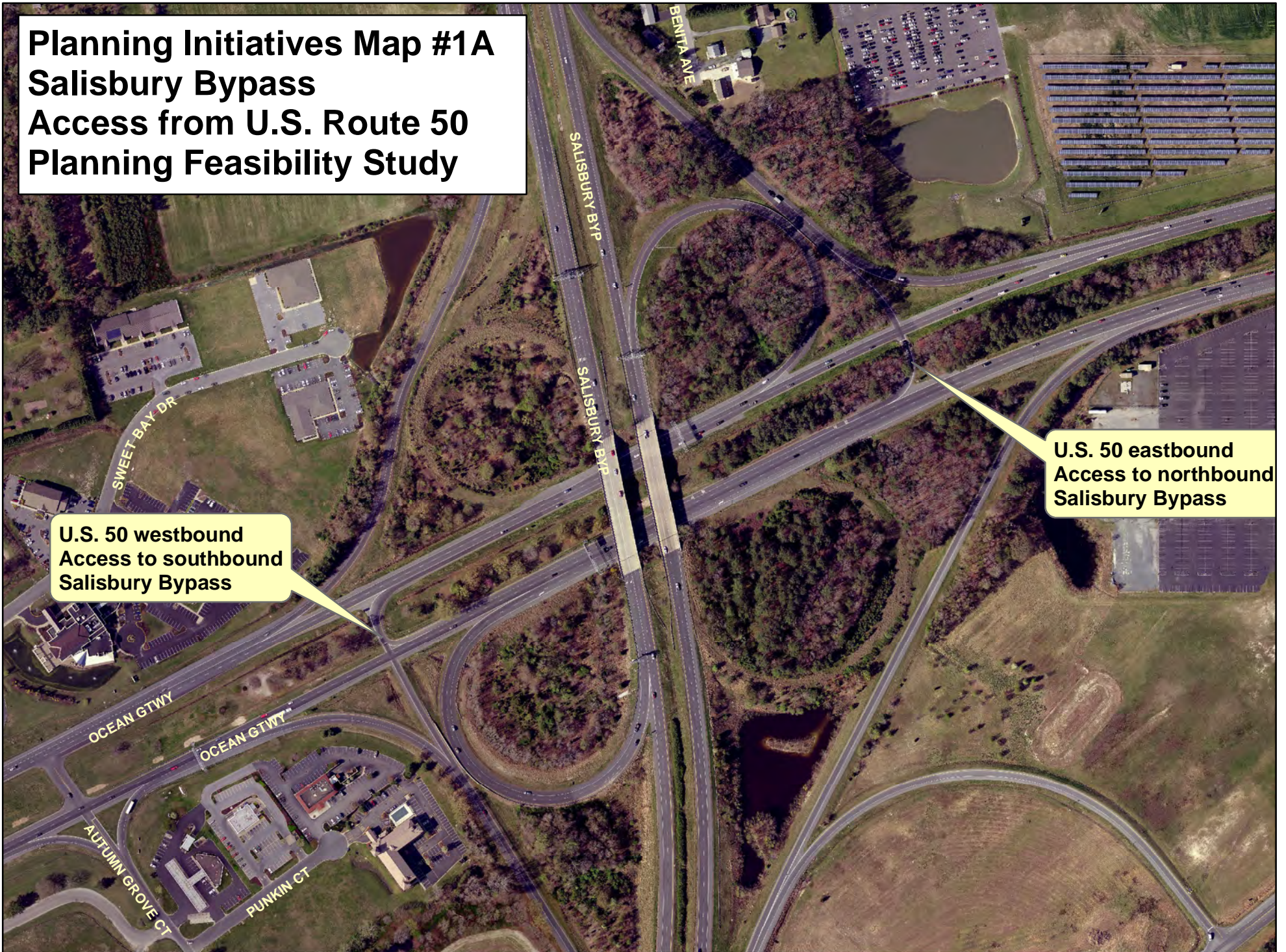
Road and Facility Improvements Map #2
U.S. Route 13
Truck Weigh and Inspection Stations Relocation



**Planning Initiatives Map #1A
Salisbury Bypass
Access from U.S. Route 50
Planning Feasibility Study**

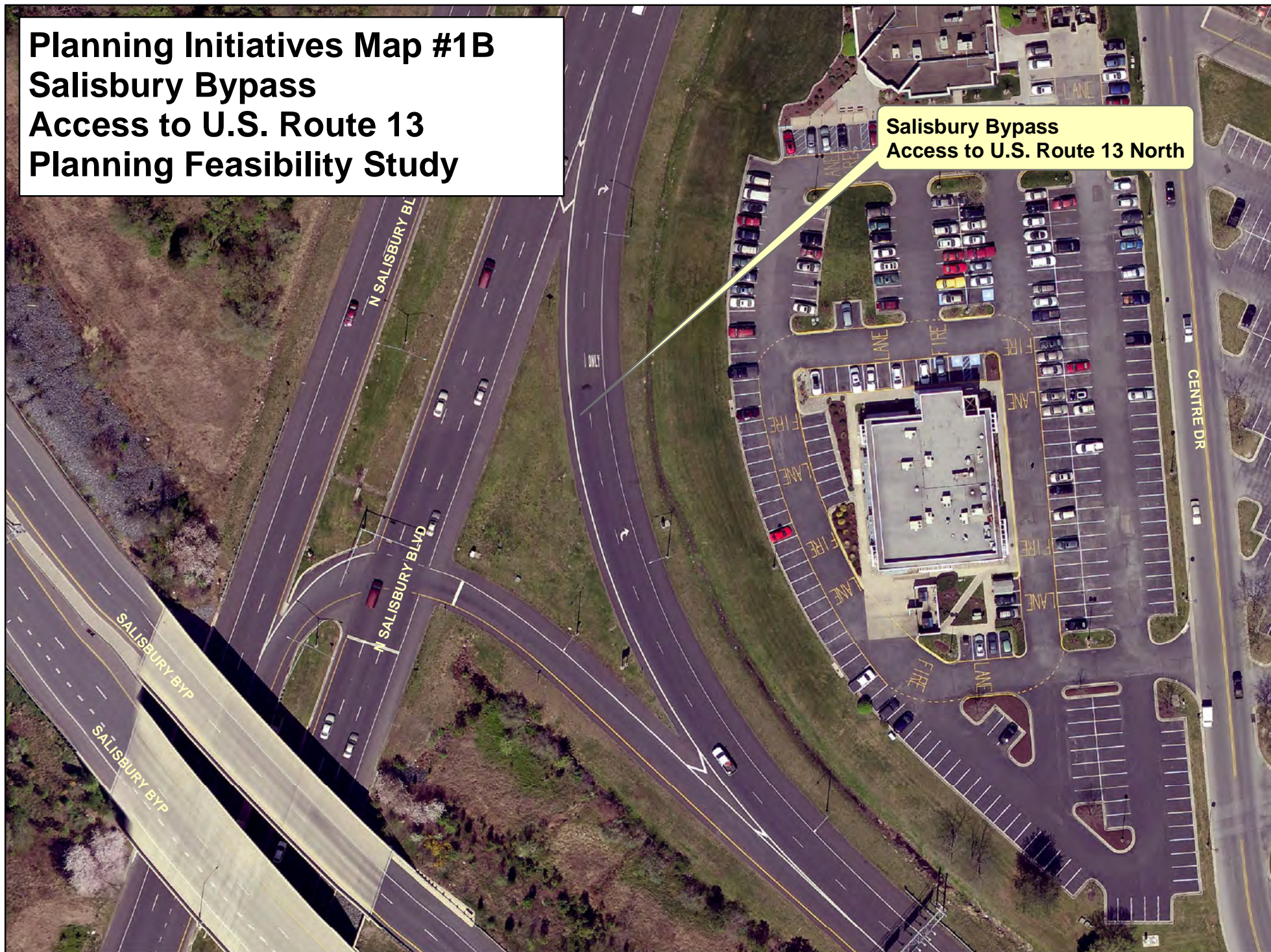
**U.S. 50 westbound
Access to southbound
Salisbury Bypass**

**U.S. 50 eastbound
Access to northbound
Salisbury Bypass**

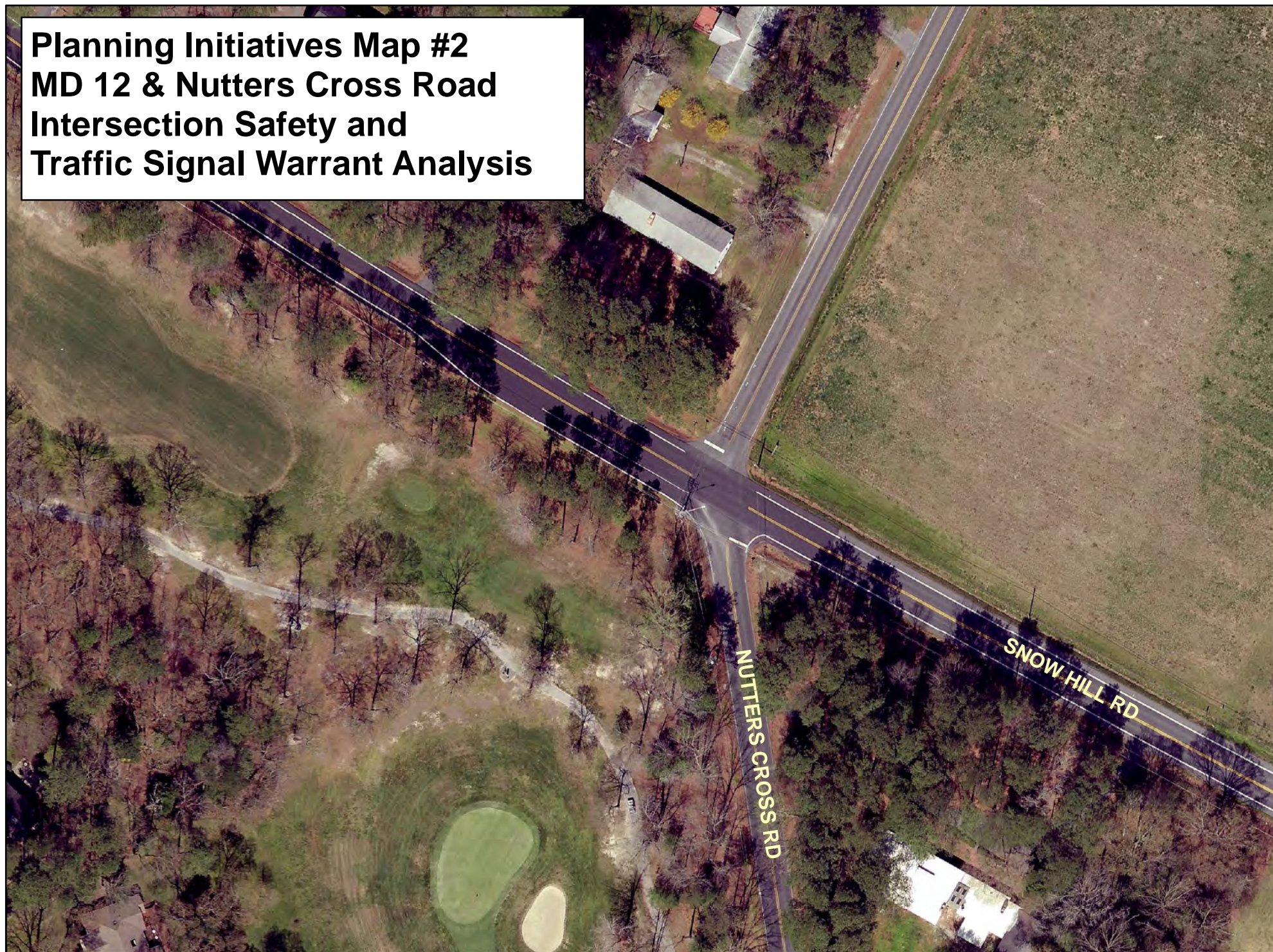


**Planning Initiatives Map #1B
Salisbury Bypass
Access to U.S. Route 13
Planning Feasibility Study**

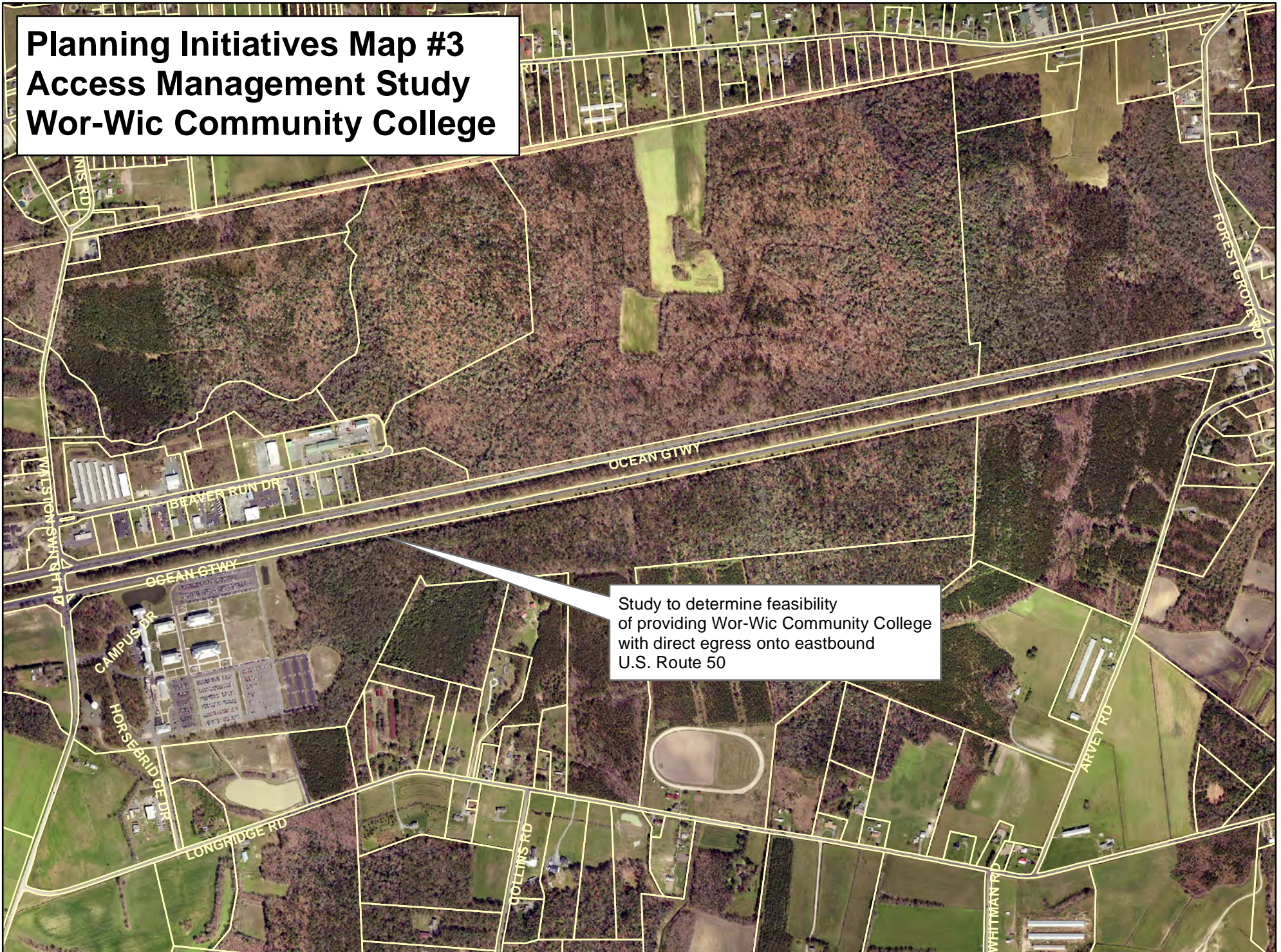
**Salisbury Bypass
Access to U.S. Route 13 North**



**Planning Initiatives Map #2
MD 12 & Nutters Cross Road
Intersection Safety and
Traffic Signal Warrant Analysis**



**Planning Initiatives Map #3
Access Management Study
Wor-Wic Community College**



Study to determine feasibility of providing Wor-Wic Community College with direct egress onto eastbound U.S. Route 50

**Municipal Requests Map #1A-Salisbury
Mill St. / Camden Ave. / W. Carroll St. / Riverside Drive
Geometric Improvements with roundabout**



COUNTY COUNCIL OF WICOMICO COUNTY, MARYLAND

2017 Legislative Session

Legislative Day No. 21

Resolution No. 122-2017

Introduced by: The President of the Council at the request of the County Executive

A RESOLUTION APPROVING A PRIORITY LETTER FOR THE MARYLAND DEPARTMENT OF TRANSPORTATION'S FY 2018 – FY 2023 CONSOLIDATED TRANSPORTATION PROGRAM (CTP).

WHEREAS, the Maryland Department of Transportation (MDOT) is in the initial stages of preparing the FY 2018 - FY 2023 Consolidated Transportation Program (CTP); and

WHEREAS, MDOT provides local governments with an opportunity to submit a "Priority Letter" containing the recommended improvements (capital expansion and system preservation projects) on State roadways to be considered for inclusion into the CTP; and

WHEREAS, the County has worked with local incorporated municipalities and the Salisbury-Wicomico Metropolitan Planning Organization to identify potential priority projects to be included within the FY 2018- FY 2023 CTP; and

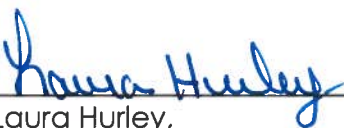
WHEREAS, the County Executive recommends the approval of the Priority Letter attached as Exhibit "A"; and

WHEREAS, the Priority Letter must be endorsed by the County Executive, County Council and the majority of the local legislative delegation before submission to MDOT.

NOW, THEREFORE, BE IT RESOLVED by the County Council of Wicomico County, Maryland that the Priority Letter, in substantially the same form as Exhibit "A", is hereby approved.

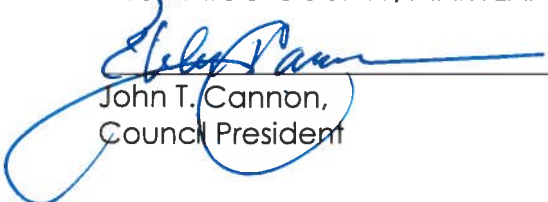
Done at Salisbury, Maryland, this 5th day of September, 2017.

ATTEST:



Laura Hurley,
Council Administrator

COUNTY COUNCIL OF
WICOMICO COUNTY, MARYLAND



John T. Cannon,
Council President

CERTIFICATION

This Resolution was Adopted , Adopted with Amendments , Failed , Withdrawn by the County Council on September 5, 2017.

Certified by 

Laura Hurley, Council Administrator