

Final FY 2026 – FY 2031 CTP

Safety, System Preservation And Economic Development

The Consolidated Transportation Program (CTP) is Maryland's six-year capital budget for transportation projects and programs, designed to advance Maryland's goals and provide

\$22.1 billion

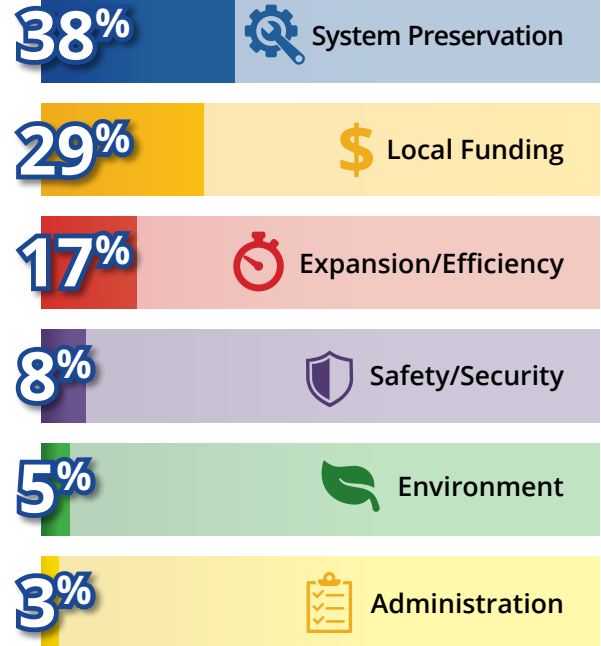
Final FY 2026 -
FY 2031 CTP

a safe, dependable transportation system that connects Marylanders to economic opportunities across the State.

Thanks to Governor Moore and the Maryland General Assembly, the last legislative session resulted in new revenues dedicated to transportation and these are reflected in the final \$22.1 billion CTP (FY 2026 – FY 2031).

Without these additional resources, the State would have seen deep, sustained cuts to the transportation program. Still, resources remain limited. This CTP directs funding strategically to improve safety, maintain the existing system and make targeted investments in economic development priorities.

Percentage of MDOT Capital Program by Investment Area



CTP Project Highlights



Key Bridge: Project is preparing for Phase 2 Construction. Demolition of the previous piers is underway.



Purple Line: Funding to complete Purple Line Construction. Project is more than 80% complete and scheduled for completion in 2027.



I-81 Phase 2: Full funding for the construction of safety improvements and freight capacity on I-81 in Western Maryland. This \$164.5 million project will widen a four-mile stretch of I-81 from four to six lanes, replace existing bridges, improve ramps and put in new stormwater management.



US 15: Full funding for capacity and safety improvements for US 15. The \$164.5 million project widens US 15 from four to six lanes, widens bridges, replaces utilities and implements Intelligent Transportation Systems and stormwater management.



Light Rail Modernization Program: \$1.4 billion project is the first major investment in the system since it's construction, upgrading all parts of the system including cars, platforms, electrical systems and more creating a new foundation for future travel and economic development.



Howard Street Tunnel Project: Funding to finish work on the tunnel which reopened to traffic in September 2025. The final double-stack route is scheduled to be operational by Spring 2026.



Port of Baltimore, Berths 11-13: \$113 million project to fund the reconstruction of critical port infrastructure is expected to go to procurement in 2026.



Baltimore Washington International (BWI) Thurgood Marshall Airport A/B Connector: Completes the project to connect concourses A and B, upgrade baggage handling and other investments critical to the airport's functions.

Safety

Safety is a primary focus in all of the projects and grants MDOT pursues. MDOT is investing in safety projects that ensure the system is safe for all transportation system users and workers. **MDOT is Serious about Safety for all.**

- **MD 97:** Full funding for the MD 97 Montgomery Hills Project, which will improve safety for all users with roadway modifications, new sidewalks, signalized crossings and better transit accommodation.
- **Advancing US Route 1:** Funding preliminary engineering for Phases 2 and 3, which will improve traffic operations, pedestrian circulation and safety and aid revitalization efforts.
- **Pedestrian Safety Action Plan (PSAP) Projects:** Designed to address acute pedestrian safety issues. Currently, there are two projects in construction, two in design and eight more will be initiating design this year.

Over \$500 million, a record amount, in funding for bike lanes, shared use paths, ADA-accessible sidewalks and other safety projects

System Preservation

Investments in maintaining the State transportation system are managed through a comprehensive and integrated asset management program.

Lowest ever number of "poor condition" bridges (<1%) with investments in bridge and roadway pavement to keep drivers moving

- **System Preservation:** CTP includes \$8.4 billion investment in system preservation, an increase of \$400 million compared to last year's CTP. Leveraged State money to receive more than \$890 million in federal funds at SHA to address bridge rehabilitation, roadway resurfacing and other needs.
- **Martin State Airport Air Traffic Control Tower:** Funding of \$23.3 million to replace one of the oldest control towers in the country with a new tower meeting modern standards for sight-lines, technology and resilience.
- **Mid-Bay Island Restoration:** A \$285 million investment helping to ensure that the shipping channel continues to function at depths necessary to receive modern shipping vessels.

Economic Development

MDOT is strategically deploying resources to spur economic development.

- **Southwest Airlines:** Completing the maintenance facility for BWI's largest customer.
- **Advancing Planning and Design for Major Projects:** Supporting economic development, including the C/D Connector and new tower at BWI Marshall Airport (\$5.0 million) and MD 90 in Worcester County (\$10.8 million).
- **Transit-Oriented Development (TOD):** Supporting TOD projects across the State, such as the State Center Redevelopment, and awarding TOD grants to Baltimore City and Montgomery County.



This CTP contains significant projects that will help to advance Marylanders' safety, protect taxpayer investments in existing infrastructure and communities, and spur economic growth. MDOT is committed to realizing these benefits and providing a transportation system that works for all Marylanders.