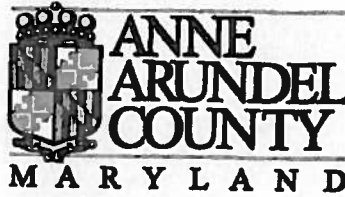
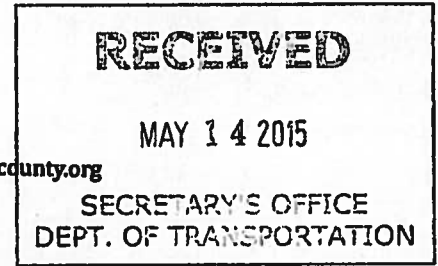


STEVEN R. SCHUH
County Executive



P.O. Box 2700 | Annapolis, Maryland 21404
(410) 222-1821 | countyexecutive@aacounty.org | www.aacounty.org



May 5, 2015

The Honorable Pete K. Rahn, Secretary
Maryland Department of Transportation
7201 Corporate Drive
PO Box 548
Hanover, MD 21076

Dear Secretary Rahn:

Enclosed is Anne Arundel County's FY 2016 Priority Projects List for your consideration for inclusion in the FY 2016 through FY 2021 *Consolidated Transportation Program*. The County sends this list to you as a guide to assist the Department in advancing necessary highway, transit, capacity, safety and enhancement projects in accordance with the Transportation Article, Sections 8-610 through 8-613.1 of the Annotated Code of Maryland. This list reflects an update of the County's previous FY 2015 Priority Letter and List, dated April 2014.

As you know, the roads in Anne Arundel County are subject to traffic generated by the multiple State owned facilities (BWI-Thurgood Marshall, Port of Baltimore, Chesapeake Bay Bridge, State Capital, and several State agencies) as well as the continuing growth of the National Security Agency (NSA) at Fort George G. Meade. This installation and its tenant agencies and contractors are very important contributors to the County's and State's economic vitality.

Despite significant reductions in highway user revenues, the County has remained a good partner in funding the necessary studies and construction to improve State infrastructure. These efforts have included funding planning studies for Annapolis Road (MD 175) and the Environmental Assessment (EA) for Fort Meade-Laurel Road (MD 198). We have funded improvements to Central Avenue (MD 214) at Muddy Creek Road (MD 468) in Mayo, completed improvements on Hog Neck Road (MD 607) at MD 100 in Lake Shore, and are partnering with the Department to build improvements on Mountain Road (MD 177) at Woods Road. We also completed 30% plans for multiple intersections around Fort Meade and hope to partner with the Department to construct necessary improvements to reduce congestion near the Fort.

The following are the County's highest priorities by various categories of funding:

"Anne Arundel County: The best place to live, work and start a business in Maryland."

Highways:

Annapolis Road (MD175): MD 175 remains the County's highest primary road priority for the reasons noted above.

Robert Crain Highway (MD 3): This road is the only connection between major suburban population centers and Fort Meade/BWI. The project has languished for years waiting for necessary environmental approvals. We ask that the Department do what it can to break the log jam and advance it to design and construction.

John Hanson Highway (US 50-US 301): We ask that the Department complete planning and design of the segment of the John Hanson Highway (US 50-US 301) from east of Rowe Boulevard (MD 70) to Governor Ritchie Highway (MD 2) to provide relief to daily recurring congestion to improve access to the State's Capital and its necessary medical facilities.

Fort Meade Road (MD 198): As noted, the County has fully funded the activities of the Maryland State Highway Administration to complete the EA of the MD 198 Corridor from MD 32 to the Baltimore-Washington Parkway. The County requests that SHA complete the EA and advance an initial or break-out project that could demonstrate the corridor's importance and obtain the necessary environmental clearance from the Federal Highway Administration.

Transit:

Odenton MARC Station TOD: Improving accessibility to the Odenton MARC Station and its more than 50 daily trains is our highest transit priority, and the County requests that MDOT identify funding to replace the existing 2,000 surface spaces with structured parking. As a good partner, the County has created a Tax Increment Financing District to assist in funding the replacement parking in garage(s).

System Preservation/Highway Safety Projects:

Mountain Road (MD 177) at Hog Neck Road (MD 607): The County has previously funded SHA to evaluate and recommend improvements to reduce recurring congestion at this intersection of two important State-maintained roads. The County recommends that the State advance funding to construct a new northbound through lane.

Community Safety and Enhancement Program:

Baltimore-Annapolis Boulevard (MD 648) Safety and Enhancement: Previously SHA initiated design of corridor safety and enhancements from MD 2 to MD 10. This corridor is a main street of Glen Burnie connecting residences to schools and commercial activities. The County requests that SHA finish the design effort and advance the project to construction.

Sidewalks:

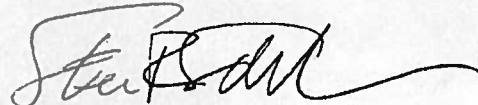
Fort Smallwood Road (MD 173) Sidewalk from Duval Highway to Riviera Drive: This segment of MD 173 carries substantial traffic and creates difficulties for pedestrians and bicyclists wishing to access schools and other public facilities. It has been identified by both SHA and the County as a Tier I pedestrian/bicycle facility. The County requests funding for design and construction of this important segment of the network.

Trails/Bikeways:

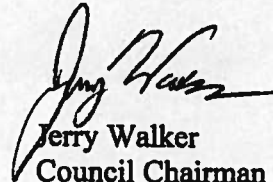
Broadneck Peninsula Trail: This important segment of the trail system will offer safe connections among public recreation areas, Anne Arundel Community College and the B&A Trail across MD 2. The County requests funding for design and construction.

Our priority list is enclosed. The attached list identifies highway, transit, and, conservation, preservation, and safety that are our priorities to maintain the mobility of our residents, visitors and work force and to improve access to important centers of activity. We hope to maintain a mutually beneficial working relationship with you and your Department.

Sincerely,



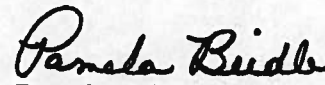
Steven R. Schuh
County Executive



Jerry Walker
Council Chairman



John C. Astle
Senate Delegation Chair



Pamela Beidle
House Delegation Chair

Enclosure

cc: Members, Anne Arundel County House and Senate Delegation
Members of County Council
John R. Hammond, Chief Administrative Officer
Christopher Phipps, Director, Department of Public Works
Larry R. Tom, Planning & Zoning Officer
George Cardwell, Planning Administrator

TRANSPORTATION PRIORITIES

HIGHWAYS

DEVELOPMENT AND EVALUATION PROGRAM

The roadway segments displayed below will require the initiation or completion of project planning studies before the actual system improvements can be constructed. These projects are included in the Highway Needs Inventory and on the Long Range Plan of the Baltimore Region and the County's *General Development Plan* (2009).

MCP 1: Annapolis Road (MD 175) from Baltimore-Washington Parkway (MD 295) to Telegraph Road (MD 170): Multi-lane Reconstruct: This project remains the County's highest priority on the primary system. The project is necessary to support the increasing travel demand at and around Fort Meade as a result of changes in installation security, increases in activity at the post, and development occurring around the installation. We ask for funding to advance the final design of the interchange at MD 295 and to initiate detailed design on the segment adjacent to Fort Meade between the interim intersection improvements at the gates to the garrison. The interchange design and construction will complement privately funded improvements along MD 175 on either side of the interchange providing a continuous improvement between National Business Park and Fort Meade's Rockenbach Road Access Control Point.

MCP 2: Robert Crain Highway (MD 3) from the Prince George's County Line to Patuxent Freeway (MD 32/I-97): Improvements in this corridor are necessary to meet the growing travel demand due to increasing residential and employment growth to the south of the alignment and increases in population and job growth in and around Fort Meade and BWI Airport. The Environmental Impact Statement identified Purpose and Need for improvements, and we recommend advancing the six-lane segment from north of Waugh Chapel-Reidel Road to MD 32 into final design and construction. We believe this segment has independent utility, will reduce recurring congestion and reduce the number of potential crashes associated with recurring congestion. Consistent with the selected alternative, this segment will also include pedestrian and bicycle facilities.

MCP 3: Fort Meade Road (MD 198) from Baltimore-Washington Parkway to Patuxent Freeway (MD 32): The project is necessary to meet current and anticipated travel demand occurring as a result of development in Laurel, BRAC at Fort Meade, NSA and US Cyber Command and to maintain safe traffic flow. Because MD 198 is the County's highest priority on the secondary system, the County is funding the environmental assessment and seeks the timely identification of short-term improvements. We ask that SHA rapidly complete the environmental studies and initiate 30% design on the selected alternative, both to meet an identified need do its part in our partnership. The draft Environmental Assessment has identified the Purpose and Need for this project and all resource and regulatory agencies have concurred.

FY 2016 Anne Arundel County Priority Letter, April 2015

MCP 4: John Hanson Highway (US 50) from the William Preston Lane, Jr. Memorial Bridge to I-97: Severn River Bridge: This is the major highway serving the Washington Metropolitan Area, the Chesapeake Bay Bridge, Eastern Shore and City of Annapolis. Portions of the facility, especially from MD 665, across the Severn River Bridge to Governor Ritchie Highway (MD 2), experience recurring congestion. SHA's previous feasibility study established a probable Purpose and Need for the capacity increase. We ask that recommended improvements to US 50 at the Severn River Bridge be funded for project planning, design and construction. Advancing this segment meets the goals identified in 2007 by elected officials in both Anne Arundel and Queen Anne's Counties.

MCP 5: Baltimore-Washington Parkway (MD 295) from MD 100 to I-195: This section of MD 295 has become more congested with the increased activity at BWI, Fort Meade, and Arundel Mills. The Environmental Assessment identified Purpose and Need for improvements and has received Location Approval. Design and construction of this corridor improvement should include the Hanover Road interchange and the Hanover Connector Road from the Parkway to Aviation Boulevard (MD 170), as well as separated pedestrian and bicycle facilities connecting the Patuxent Valley State Park to BWI Trail.

MCP 6: Patuxent Freeway (MD 32) from MD 175 to I-95: Growth in east-west travel coupled with planned expansion of the NSA, Fort Meade, US Cyber Command and their contractor base will only exacerbate recurring congestion and the need for increased capacity. We recommend initiation of project planning and request that managed lanes be considered as part of that process. Construction of improvements along MD 32 will provide more efficient multi-modal connections between one of the largest employment sites in the State with large population areas in Annapolis and Columbia and will also promote the five goals of the MTP.

SYSTEM PRESERVATION/HIGHWAY SAFETY PROJECTS

The following should be studied to identify the necessary improvements needed to improve motorist safety and relieve congestion, or to take advantage of previous design studies, advancing those improvements to construction. Construction of these projects is consistent with the adopted goals of the MTP.

Mountain Road (MD 177) at Magothy Bridge-Hog Neck Road (MD 607). The County previously funded planning studies, design and construction of the MD 100/MD 607 intersection with extended capacity to the northbound approach of its intersection with MD 177. The intersection at Mountain Road continues to experience crashes and recurring congestion. The County believes that improvements at this location will address both concerns.

Intersection Improvements to Support BRAC Recommendations. Anne Arundel County, in partnership with SHA, completed studies in 2009 developing 30% plans for various intersections near Fort Meade. We believe these State-maintained intersections should be advanced to final design especially in light of the Enhanced Use Lease at project, located at Fort Meade being finalized:

FY 2016 Anne Arundel County Priority Letter, April 2015

- Reece Road (MD 174) at Pioneer Drive
- Reece Road (MD 174) at Telegraph Road (MD 170)
- Ridge Road (MD 713) at Severn Road

Aris T. Allen Boulevard (MD 665) at Riva Road. We seek the State's assistance in design and construction of improvements to reduce recurring congestion at this gateway to Annapolis and Parole.

Mount Zion-Marlboro Road (MD 408) at Bayard Road (MD 422). We seek construction funds for a new slip ramp and design of long term improvements.

Bay Front Road (MD 258) at MD 794 combined with Southern Maryland Boulevard (MD 4) at Talbot Road. We are seeking funds for safety improvements.

MD 100 at Coca Cola Drive. We seek funding to conduct appropriate planning and preliminary design to evaluate traffic operation conditions at the interchange to determine the extent of improvement necessary to address recurring queue formation.

COMMUNITY SAFETY AND ENHANCEMENT PROGRAM

The following projects, when funded for construction, will help revitalize these redeveloping communities by improving pedestrian circulation. These requested projects support revitalization in the State's mature communities and are consistent with adopted goals of the MTP and support prior investments in planning.

Baltimore-Annapolis Boulevard (MD 648) from Cromwell Light Rail Station to Arundel Expressway (MD 10), we are seeking funds to design a pedestrian and bicycle compatible corridor connecting Glen Burnie with the State's light rail investment.

Belle Grove Road (MD 170) from MD 648 to Ritchie Highway (MD 2), we are seeking planning and design funds for the section from I-895 to Baltimore City Line, so that the corridor is complete.

West Street (MD 450) between MD 2 and Admiral Drive, we are seeking planning/design funds to reduce congestion, improve pedestrian and bicycle compatibility, and enhance a major gateway to the State's capital.

Deale-Churchton Road (MD 256) from Bay Front Road East (MD 258) to Rockhold Creek Streetscape, we are seeking planning and design funds for the balance of the project.

Taylor Avenue (MD 435) from Rowe Boulevard (MD 70) to end of State maintenance, we are seeking design funds to create a pedestrian and bicycle compatible corridor connecting the State employment complex with adjoining communities consistent with

FY 2016 Anne Arundel County Priority Letter, April 2015

the goals and policies of the MTP and prior recommendations in the City of Annapolis West Annapolis Study.

TRANSIT

DEVELOPMENT/EVALUATION PROGRAM

T.1 MARC Service Capacity and Accessibility Improvements

At the request of MDOT, the Anne Arundel County Council in Resolution 3-15 designed an area of approximately 750 acres around the Odenton MARC Station as a Transit Oriented Development Area. To improve accessibility to the MARC system, garages must be constructed in Odenton, which has the largest number of boardings for any suburban station in the system. The garage increases accessibility, serves as a focal point for transit to support development at Fort Meade and the Odenton Town Center and reduces the sprawl and inefficiency of surface lots scattered throughout Odenton.

T.2 Commuter Bus

With the growing price of auto operation as well as the aging of the workforce, investment in more commuter bus routes and parking facilities is necessary. The County appreciates funding for construction to enlarge the Davidsonville (MD 424) park and ride lot and the increase in commuter bus service between Severna Park and Washington, DC. We seek funds to increase commuter bus service connecting the County with the Baltimore and Washington metropolitan area, thus supporting all five of the MTP goals and recommendations in the Transit Development Plan.

T.3 Annapolis/Parole Intermodal Facility

This transit facility, included in previous Priority Letters since 2005, is envisioned to be located in Annapolis or Parole and to support the current and increasing transit demand within the Annapolis/Parole area and to serve as a hub for transit service connecting the Washington and Baltimore areas, plus Fort Meade and BWI. Purpose and Need for a garage facility is well documented in MDOT funded studies (conducted in 2002 through 2004) of the Annapolis/Parole Area and recommended in both the City of Annapolis and the County's Transit Development Plans. Current park and ride capacity in the Annapolis/Parole area is insufficient to meet the increasing demand caused by growth in employment in the Washington Area and recurring congestion. The City of Annapolis has received planning funds to conduct pre-NEPA analysis and is supported in that effort by the County. Supporting greater access to transit meets all five MTP goals. We are seeking project planning and design funds to help implement recommendations of the planning study.

SIDEWALK PROGRAM

These projects connect neighborhoods with public facilities and activity centers and provide residents with an alternate means of mobility. The purpose and need for these projects has been previously identified in the adopted *Pedestrian and Bicycle Master Plan* and meet the goals of the MTP. The County appreciates efforts of SHA to address

FY 2016 Anne Arundel County Priority Letter, April 2015

previous requests for sidewalk construction along Central Avenue in Mayo and Davidsonville Road in Crofton.

Fort Smallwood Road (MD 173) from Duval Highway to Riviera Drive

Mayo Road (MD 253) from Solomons Island Rd (MD 2) to Central Avenue (MD 214)

Defense Highway (MD 450) Tarrytown Avenue to Good Hope Road

Ridgley Avenue (MD 436) from Taylor Avenue to Arundel Place

Nursery Road (MD 168) from Hammonds Ferry Road to Baltimore Annapolis Boulevard (MD 648)

West Street (MD 450) from Solomons Island Road to Admiral Drive

Crain Highway (MD 3 Bus) Green Branch Lane to Oak Manor Drive

Solomons Island Road (MD 2) from Admiral Cochran to Forest Drive

TRAILS/BIKEWAYS

Broadneck Peninsula Trail: The Broadneck Peninsula Trail is a proposed 9 mile paved recreational trail from Maryland Route 2 to Sandy Point State Park located on the north side of College Parkway. Phase one from Green Holly Drive to Old Cape St. Claire Road was constructed with a Federal SAFETEA-LU grant in 2013. Phase II from Green Holly to Bay Dale Drive is in design and is fully funded with a Federal TAP grant and a local match. The County would greatly benefit from future TAP funding assistance for Phase III, which will extend the Trail from Bay Dale Drive to Peninsula Farm Road, along the north side of College Parkway. Phase III is programmed for design in FY 2018, with anticipated construction in FY 2020. If federal construction funds are available before FY 2020, the County will make every effort to expedite the design of this important off road recreational trail.

South Shore Trail: The South Shore Trail is a planned 14 mile paved recreational trail from Odenton to Annapolis located on the South Shore Line of the former WB&A railroad right of way. The County continues to make progress with the design of Phases I and II of the South Shore Trail. Phase I, which extends from Waterbury Road to Hansel Drive near Route 3 (Crain Highway), is the recipient of a Federal SAFETEA-LU earmark grant, and is scheduled for construction in the spring of 2016. Phase II, from Bonheur Drive to Sappington Station Road will be the subject of a Transportation Alternatives Program (TAP) grant application in May of 2015. The County will make every reasonable effort to comply with the two year construction advertising requirement if our grant request is approved.

FY 2016 Anne Arundel County Priority Letter, April 2015

WB&A Trail: The WB&A Trail is a planned 9 mile paved recreational trail from Odenton to the Patuxent River on the abandoned Washington, Baltimore and Annapolis Railroad right of way. In addition to the local and regional benefits of this Trail, it is also a critical component of the East Coast Greenway and the American Discovery Trail. Phase I and II of the Trail are operational from Odenton to Conway Road. Phase III of the Trail from Conway Road to the Patuxent River is currently under construction by the developer of the Two Rivers subdivision. The final phase of this ten foot wide, paved, recreational Trail consists of a bridge over the Patuxent River to connect to the WB&A Trail in Prince Georges County. The bridge will be located where Phase III of the Trail in Anne Arundel County intersects the Patuxent River. Anne Arundel County has received a Bikeways Program grant for 80% of the estimated cost for bridge design. Prince George's and Anne Arundel Counties will share equally the 20% match. The Anne Arundel County Department of Public Works will manage the design effort for the bridge with construction programmed for FY17. Anne Arundel County and Prince George's Counties would welcome State or Federal assistance with the construction of this bridge in FY 2017.

FY 2016 Anne Arundel County Priorities Letter, April 2015
MDOT Forms Appendix

Project Questionnaire: Annual Request to Maryland DOT for Project Funding

Please provide the following information for each major capital project priority identified

- 1) **Name of Project:** MD 175: MD 295 to MD 170
- 2) **Submitting Jurisdiction:** Anne Arundel County
- 3) **Location of the project (describe project limits and location, attach map if available and applicable):** MD 295 (BW Parkway) to MD 170 (Telegraph Rd)
- 4) **Anticipated cost and funding source (approximate if available):** \$213 Million (Federal/State)
- 5) **Description of project purpose and need (up to one paragraph):** Complete final design across entire corridor having received FHWA concurrence and final design and construction for new interchange at Baltimore-Washington Parkway. Purpose and Need established by prior Environmental Assessment document. Interchange connects two privately funded improvements along MD 175 west and east of MD 295 and creates a more efficient connection to Fort George G. Meade, a major employment and economic center for the State with more than 58,000 permanent jobs.
- 6) **Is the project contained within the local Metropolitan Planning Organization's fiscally constrained long-range transportation plan?** Yes No **Project located outside of MPO boundaries:** NO
- 7) **Is the project consistent with the local land use plans?** Yes No **Describe specifics on how the project supports the local land use plan goals, objectives and/or policies:** YES
- 8) **In county priority letter?** Yes No
- 9) **Smart Growth status and explanation:** In PFA supports one of the largest employment concentrations in the State.
- 10) **Please indicate which of the following Maryland Transportation Plan goals and objectives are served by the requested project investment (mark each goal served by the project and relevant objectives within each goal)**

Goal: Quality of Service. Enhance users' access to, and positive experience with, all MDOT transportation services.

Objective: Enhance customer service and experience.

Objective: Provide reliable and predictable travel time across modal options for people and goods.

Objective: Facilitate coordination and collaboration with agency partners and stakeholders.

If checked, please describe how the project supports the goal and objectives: See above. Improvement to MD 175 connects 55,000 jobs with major transportation facilities.

Goal: Safety and Security: Provide transportation assets that maximize personal safety and security in all situations.

Objective: Reduce the number and rate of transportation related fatalities and injuries.

Objective: Secure transportation assets for the movement of people and goods.

Objective: Coordinate and refine emergency response plans and activities.

If checked, please describe how the project supports the goal and objectives: Interchange and roadway improvements reduce travel time due to elimination of recurring congestion, reduce crash potential due to reduction in congestion and provide for more efficient evacuation of Fort Meade in the event that such a contingency becomes necessary.

Goal: System Preservation and Performance: Protect Maryland's investment in its transportation system through strategies to preserve existing assets and maximize the efficient use of resources and infrastructure.

Objective: Preserve and maintain the existing transportation network.

Objective: Maximize operational performance and efficiency of existing systems.

If checked, please describe how the project supports the goal and objectives: Improvements in interchange and roadway modernize typical section of MD 175, provides roadway improvements reducing ongoing maintenance expenses and creates greater value for other previously constructed public and private improvements to the roadway.

Goal: Environmental Stewardship: Develop transportation policies and initiatives that protect the natural, community, and historic resources of the State and encourage development in areas that are best able to support growth.

Objective: Coordinate land use and transportation planning to better promote Smart Growth.

Objective: Preserve and enhance Maryland's natural, community, and historic resources.

Objective: Support initiatives that further our commitments to environmental quality.

If checked, please describe how the project supports the goal and objectives: MD 175 improvements provide a more efficient connection to Fort Meade and Odenton Town Center which are State recognized employment and commercial centers and reduce emissions created by recurring congestion.

Goal: Connectivity for Daily Life: Support continued economic growth in the State through strategic investments in a balanced, multimodal transportation system.

Objective: Provide balanced, seamless, and accessible multimodal transportation options for people and goods.

Objective: Facilitate linkages within and beyond Maryland to support a healthy economy.

Objective: Strategically expand network capacity to manage growth.

If checked, please describe how the project supports the goal and objectives: MD 175 improvements consistent with the NEPA recommendation expand network capacity while supporting growth in employment, commercial and residential development consistent with State and County plans.

11) Additional Comments/Explanation: County's highest priority since 2004.

MD 175: MD 170 to Baltimore Washington Pky



Project Questionnaire: Annual Request to Maryland DOT for Project Funding

Please provide the following information for each major capital project priority identified

- 1) **Name of Project:** Robert Crain Hwy (MD 3): Prince George's County Line to Patuxent Fwy (MD 32)
- 2) **Submitting Jurisdiction:** Anne Arundel County
- 3) **Location of the project (describe project limits and location, attach map if available and applicable):** Prince George's County Line (Patuxent River) to Patuxent Freeway (MD 32)
- 4) **Anticipated cost and funding source (approximate if available):** \$492 Million
- 5) **Description of project purpose and need (up to one paragraph):** Project has been subject to an Environmental Impact Statement and held its Location/Design Public Hearing in March 2004. Purpose and Need was determined by SHA and received concurrence by resource agencies in an earlier time frame. The project provides an important connection between Bowie an area of over 50,000 residents with Fort Meade (over 58,000 jobs), BWI-Thurgood Marshall Airport (over 12,000 jobs plus the State's principle airport) and other employment and economic areas of opportunity. MD 3 is the only viable highway conduit between the ever increasing population areas of Bowie and Crofton and the employment areas of Fort Meade and BWI-Thurgood Marshall.
- 6) **Is the project contained within the local Metropolitan Planning Organization's fiscally constrained long-range transportation plan?** Yes No Project located outside of MPO boundaries: Project spans MPO boundary into Prince George's County in the MWCOG area.
- 7) **Is the project consistent with the local land use plans?** Yes No Describe specifics on how the project supports the local land use plan goals, objectives and/or policies: Project is identified as a principle arterial on adopted County Plans. It is also identified as a pedestrian/bicycle corridor linking multiple communities with trails in both counties.
- 8) **In county priority letter?** Yes No
- 9) **Smart Growth status and explanation:** Project is located within a PFA and has been reviewed by MDOT and MDP and received their support following those reviews.
- 10) **Please indicate which of the following Maryland Transportation Plan goals and objectives are served by the requested project investment (mark each goal served by the project and relevant objectives within each goal)**

Goal: Quality of Service. Enhance users' access to, and positive experience with, all MDOT transportation services.

1/25/2012

Objective: Enhance customer service and experience.

Objective: Provide reliable and predictable travel time across modal options for people and goods.

Objective: Facilitate coordination and collaboration with agency partners and stakeholders.

If checked, please describe how the project supports the goal and objectives: Project has Final Environmental Impact Statement completed and has the support of FHWA and the various resource agencies. Project will increase capacity, reduce crash potential, provide for safer bicycle and pedestrian use along the corridor and increase efficiency of multimodal connections between Prince George's County, Crofton, Fort Meade/Odenton and BWI.

Goal: Safety and Security: Provide transportation assets that maximize personal safety and security in all situations.

Objective: Reduce the number and rate of transportation related fatalities and injuries.

Objective: Secure transportation assets for the movement of people and goods.

Objective: Coordinate and refine emergency response plans and activities.

If checked, please describe how the project supports the goal and objectives: Project will increase capacity along the only possible north-south corridor between Prince George's County, Fort Meade (one of the largest employment concentrations in the State), BWI (a major state transportation asset) and Odenton (an adopted TOD by MDOT).

Goal: System Preservation and Performance: Protect Maryland's investment in its transportation system through strategies to preserve existing assets and maximize the efficient use of resources and infrastructure.

Objective: Preserve and maintain the existing transportation network.

Objective: Maximize operational performance and efficiency of existing systems.

If checked, please describe how the project supports the goal and objectives: Project will increase capacity along a crucial corridor in an anticipated growth area of the State. Improvements will provide greater efficiency from prior State investments in the corridor.

Goal: Environmental Stewardship: Develop transportation policies and initiatives that protect the natural, community, and historic resources of the State and encourage development in areas that are best able to support growth.

Objective: Coordinate land use and transportation planning to better promote Smart Growth.

Objective: Preserve and enhance Maryland's natural, community, and historic resources.

Objective: Support initiatives that further our commitments to environmental quality.

If checked, please describe how the project supports the goal and objectives: Project will provide increased capacity, reduced crash potential without requiring construction along a new alignment which would increase potential for intrusion and environmental degradation of the Patuxent floodplain. The selected alternative in the FEIS has concurrence from State and Federal resource agencies.

Goal: Connectivity for Daily Life: Support continued economic growth in the State through strategic investments in a balanced, multimodal transportation system.

Objective: Provide balanced, seamless, and accessible multimodal transportation options for people and goods.

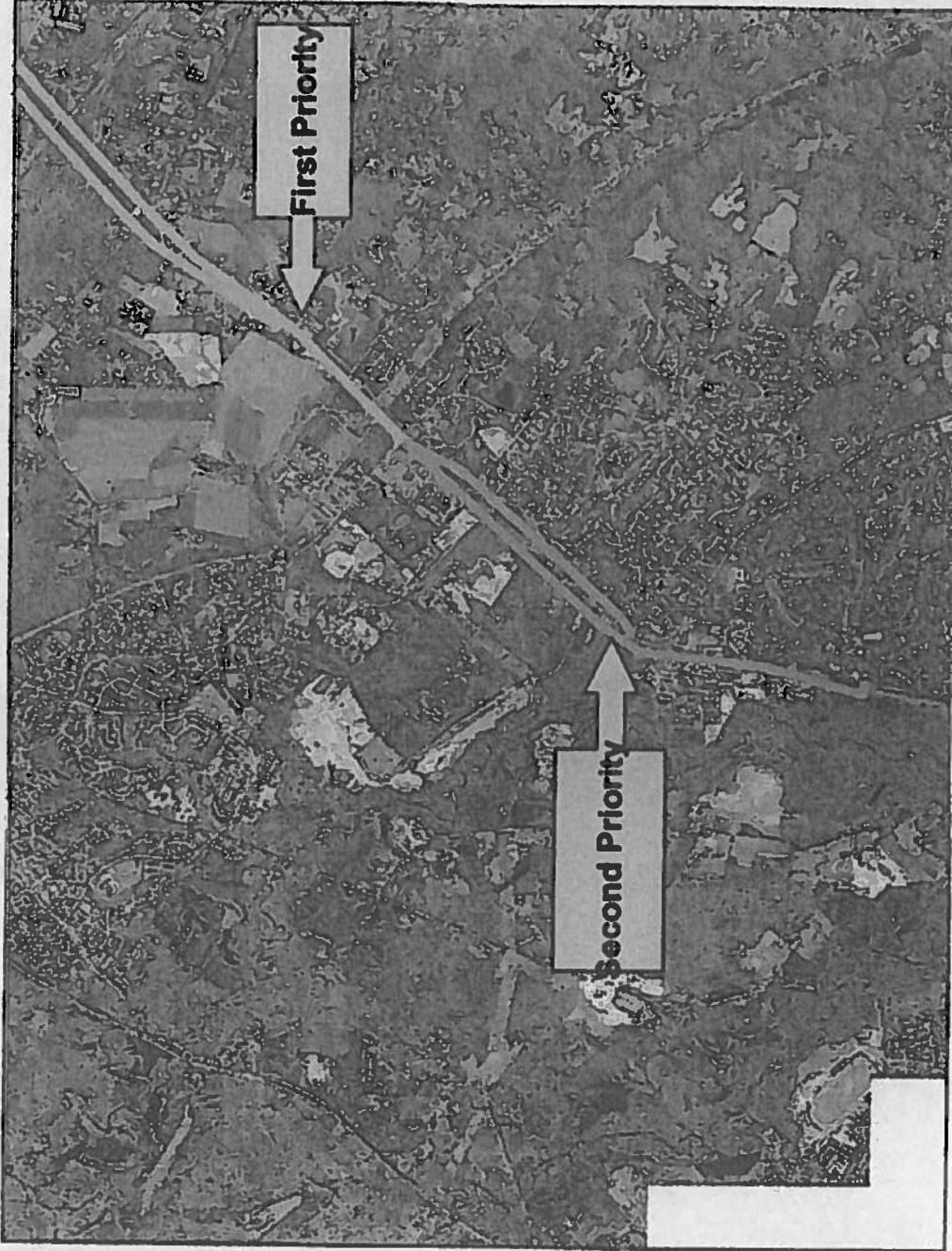
Objective: Facilitate linkages within and beyond Maryland to support a healthy economy.

Objective: Strategically expand network capacity to manage growth.

If checked, please describe how the project supports the goal and objectives: See prior responses. MD 3 is the only north-south corridor in which capacity improvements can be provided allowing for more efficient travel between residential and commercial activity centers in northeastern Prince George's County, Fort Meade/Odenton and BWI.

11) Additional Comments/Explanation: Project has been identified in County Priority Letters for a decade. Project has a completed FEIS. A smaller segment (Waugh Chapel-Reidel Rd to MD 175) could be advanced to final design and construction. This would support travel between Crofton, Fort Meade and BWI/Odenton without encumbering substantial costs associated with Patuxent River crossings and interchanges required further south along the corridor.

MD 3: US 50-US301 to MD 32



Project Questionnaire: Annual Request to Maryland DOT for Project Funding

Please provide the following information for each major capital project priority identified

- 1) **Name of Project:** John Hanson Highway (US 50-301): I97 to William Preston Lane Jr. Memorial Bridge
- 2) **Submitting Jurisdiction:** Anne Arundel County
- 3) **Location of the project (describe project limits and location, attach map if available and applicable):** US 50-301 from I-97 to Bay Bridge
- 4) **Anticipated cost and funding source (approximate if available):** \$317 M
- 5) **Description of project purpose and need (up to one paragraph):** This segment of US 50 experiences recurring congestion mostly due to lack of adequate receiving lanes as well as poor access control due to use of auxiliary lanes permitting weave/merge/diverge actions throughout. Specific recommendation is to advance previous feasibility study conducted by SHA to reconstruct the approaches and deck of the Severn River Bridge from Ridgely Avenue to Governor Ritchie Highway (MD 2) providing for four east bound travel lanes with three west bound travel lanes reducing PM peak period recurring congestion. While this proposal only addresses the area of recurring congestion, forecasts indicate that US 50-301 from I-97 to the William L. Preston Jr, Memorial (Chesapeake Bay) Bridge will not be able to support future travel demand. Since upgrades of the larger segment will require much lead time, it is necessary to begin the project planning process.
- 6) **Is the project contained within the local Metropolitan Planning Organization's fiscally constrained long-range transportation plan?** Yes No **Project located outside of MPO boundaries:** NO
- 7) **Is the project consistent with the local land use plans?** Yes No **Describe specifics on how the project supports the local land use plan goals, objectives and/or policies:** Project more efficiently supports travel demand generated by State's capital in Annapolis, development of Parole Town Center, US Naval Academy, and through demand using the Bay Bridge.
- 8) **In county priority letter?** Yes No
- 9) **Smart Growth status and explanation:** Provides key infrastructure connecting Maryland's Eastern Shore with its capital and State recognized town center development.
- 10) **Please indicate which of the following Maryland Transportation Plan goals and objectives are served by the requested project investment (mark each goal served by the project and relevant objectives within each goal)**

Goal: Quality of Service. Enhance users' access to, and positive experience with, all MDOT transportation services.

Objective: Enhance customer service and experience.

Objective: Provide reliable and predictable travel time across modal options for people and goods.

Objective: Facilitate coordination and collaboration with agency partners and stakeholders.

If checked, please describe how the project supports the goal and objectives: Improvements along US 50-301 will reduce daily recurring congestion which is only more apparent during peak demand periods for beaches and other amenities on Maryland's Eastern Shore, much of which were provided by or promoted with State funding.

Goal: Safety and Security: Provide transportation assets that maximize personal safety and security in all situations.

Objective: Reduce the number and rate of transportation related fatalities and injuries.

Objective: Secure transportation assets for the movement of people and goods.

Objective: Coordinate and refine emergency response plans and activities.

If checked, please describe how the project supports the goal and objectives: Improvements along US 50 between I-97 and the Bay Bridge will reduce recurring congestion leading to crashes and recurring incidents, limiting the ability for emergency vehicles accessing Anne Arundel Medical Center, and creating time loss for goods movement from the Port of Baltimore and BWI-Thurgood Marshall International Airport to population centers on the Eastern Shore.

Goal: System Preservation and Performance: Protect Maryland's investment in its transportation system through strategies to preserve existing assets and maximize the efficient use of resources and infrastructure.

Objective: Preserve and maintain the existing transportation network.

Objective: Maximize operational performance and efficiency of existing systems.

If checked, please describe how the project supports the goal and objectives: Designing and constructing the improvement noted above improves the efficiency of a major transportation facility (US 50-301) without the need to identify other crossings of the Severn River with all the community and environmental impacts associated with such a decision.

Goal: Environmental Stewardship: Develop transportation policies and initiatives that protect the natural, community, and historic resources of the State and encourage development in areas that are best able to support growth.

Objective: Coordinate land use and transportation planning to better promote Smart Growth.

Objective: Preserve and enhance Maryland's natural, community, and historic resources.

Objective: Support initiatives that further our commitments to environmental quality.

If checked, please describe how the project supports the goal and objectives: Improvements identified will offer more efficient connection to the State Capital, Parole Town Center, hospital and employment centers already identified and supported by the State. Reduction in recurring congestion will reduce vehicular-generated emissions contributing to identified poor air quality in the region.

Goal: Connectivity for Daily Life: Support continued economic growth in the State through strategic investments in a balanced, multimodal transportation system.

Objective: Provide balanced, seamless, and accessible multimodal transportation options for people and goods.

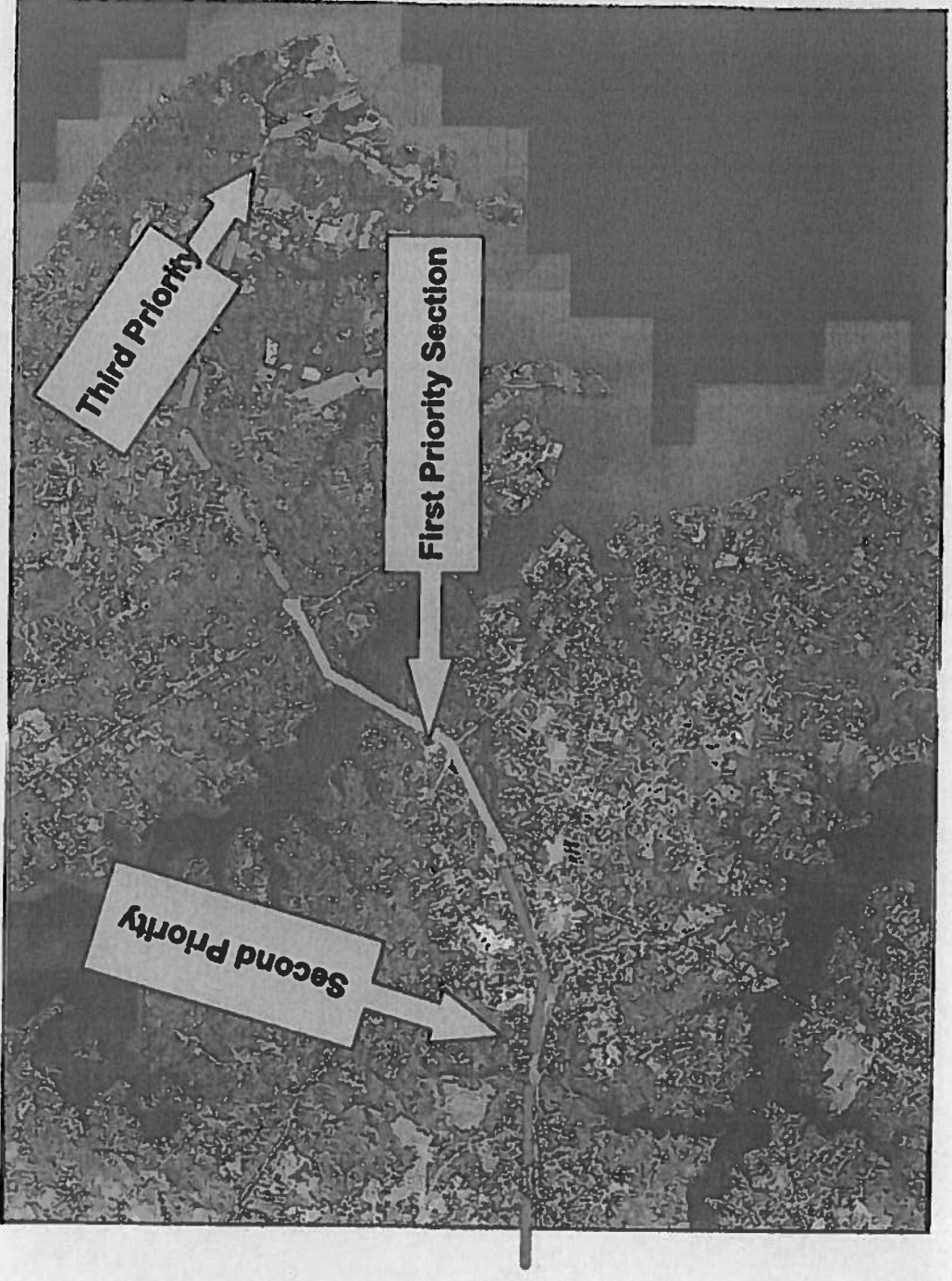
Objective: Facilitate linkages within and beyond Maryland to support a healthy economy.

Objective: Strategically expand network capacity to manage growth.

If checked, please describe how the project supports the goal and objectives: Improvements to US 50-301 will add capacity to reduce congestion and will enable bus transit operations (MTA 950 and potentially others) to enjoy travel time benefits now lost through recurring congestion. US 50-301 is the lifeline route to Maryland's Eastern Shore and that region's connection to employment and governmental services located on the western shore.

11) Additional Comments/Explanation: Previously identified in County Priority Letters and supported by Queen Anne's County.

US 50-US 301: MD 70 to MD 2-Annapolis



Project Questionnaire: Annual Request to Maryland DOT for Project Funding

Please provide the following information for each major capital project priority identified

- 1) **Name of Project:** Fort Meade Rd (MD 198): Baltimore Washington Pky to Patuxent Fwy (MD 32)
- 2) **Submitting Jurisdiction:** Anne Arundel County
- 3) **Location of the project (describe project limits and location, attach map if available and applicable):** Baltimore Washington Pky to Patuxent Fwy (MD 32)
- 4) **Anticipated cost and funding source (approximate if available):** \$255 Million
- 5) **Description of project purpose and need (up to one paragraph):** MD 198 serves as a major access roadway from Laurel and the Baltimore Washington Pky (BWP) to Fort Meade and the National Security Agency on the Fort with a current combined employment estimate of 58,000 jobs and an anticipated growth of an additional 20,000 jobs over the next two decades making it one of the largest employment concentrations in the State. Along the roadway are two bridges spanning the Patuxent River, currently in poor condition and requiring upgrades. The roadway's interchange with the BWP, a facility on the National Register of History Places, will also require upgrades to support planned growth at Fort Meade and other development being advanced to support activities at Fort Meade. The project currently has a draft Environmental Assessment which is being funded by Anne Arundel County and has had a Location/Design Public Hearing in November 2011. SHA has identified a follow-on or break out project at the BWP/MD 198 Interchange in an effort to advance the project.
- 6) **Is the project contained within the local Metropolitan Planning Organization's fiscally constrained long-range transportation plan?** Yes No **Project located outside of MPO boundaries:** YES
- 7) **Is the project consistent with the local land use plans?** Yes No **Describe specifics on how the project supports the local land use plan goals, objectives and/or policies:** MD 198 is identified as a principle arterial on adopted County plans, it also is a facility on which pedestrian and bicycle facilities are located based on adopted County Plans and serves to connect Fort Meade and Odenton area with Maryland City and Laurel by spanning the BWP. Growth occurring at Fort Meade according to Federal Action and growth occurring at Odenton which is an adopted Transit Oriented Development Area by the Maryland Department of Transportation require capacity increases along MD 198 to maintain an adequate level of service.
- 8) **In county priority letter?** Yes No

- 9) **Smart Growth status and explanation:** The project is located within a PFA and connects major employment and residential areas in the County.
- 10) Please indicate which of the following Maryland Transportation Plan goals and objectives are served by the requested project investment (mark each goal served by the project and relevant objectives within each goal)

Goal: Quality of Service. Enhance users' access to, and positive experience with, all MDOT transportation services.

Objective: Enhance customer service and experience.

Objective: Provide reliable and predictable travel time across modal options for people and goods.

Objective: Facilitate coordination and collaboration with agency partners and stakeholders.

If checked, please describe how the project supports the goal and objectives: Project supports the quality of service goal by providing an improved connection promoting better, more efficient access to one of the largest employment concentrations in the State and reduces forecast congestion due to increasing travel demand.

Goal: Safety and Security: Provide transportation assets that maximize personal safety and security in all situations.

Objective: Reduce the number and rate of transportation related fatalities and injuries.

Objective: Secure transportation assets for the movement of people and goods.

Objective: Coordinate and refine emergency response plans and activities.

If checked, please describe how the project supports the goal and objectives: Project supports the safety and security goal by reducing crash potential due to peak period congestion, increasing the efficiency of freight movement between MD 32 and I-95 via Laurel and Fort Meade, and offers greater capacity to support emergency response activities to Fort Meade, a very sensitive and potentially high value target.

Goal: System Preservation and Performance: Protect Maryland's investment in its transportation system through strategies to preserve existing assets and maximize the efficient use of resources and infrastructure.

Objective: Preserve and maintain the existing transportation network.

Objective: Maximize operational performance and efficiency of existing systems.

If checked, please describe how the project supports the goal and objectives: The present bridges spanning the Patuxent River along MD 198 are in need of substantial upgrade and are not currently

designed in response to changes in the Patuxent River floodplain and flow. The capacity of the roadway needs to be expanded to meet forecast travel demand.

Goal: Environmental Stewardship: Develop transportation policies and initiatives that protect the natural, community, and historic resources of the State and encourage development in areas that are best able to support growth.

Objective: Coordinate land use and transportation planning to better promote Smart Growth.

Objective: Preserve and enhance Maryland's natural, community, and historic resources.

Objective: Support initiatives that further our commitments to environmental quality.

If checked, please describe how the project supports the goal and objectives: See responses above regarding bridge issues as well as the opportunities to permit extensions of Green Corridors along the Patuxent Wildlife Refuge area connecting them to tributaries of the river.

Goal: Connectivity for Daily Life: Support continued economic growth in the State through strategic investments in a balanced, multimodal transportation system.

Objective: Provide balanced, seamless, and accessible multimodal transportation options for people and goods.

Objective: Facilitate linkages within and beyond Maryland to support a healthy economy.

Objective: Strategically expand network capacity to manage growth.

If checked, please describe how the project supports the goal and objectives: See prior responses. Capacity increases in this roadway segment allow for more efficient connections between major employment and residential developments offering access to desirable, high paying jobs for more communities in northern Prince George's County as well as access from the recently opened Intercountry Connector.

- 11) **Additional Comments/Explanation: Project has been identified through the BRAC process by the County and the Governor's BRAC Subcabinet. Anne Arundel County seeing the need for this project is currently funding all planning efforts and looks to the State to be a good partner and continue to advance this project through design and into construction.**

MD 198: Baltimore Washington Pky to MD 32



Project Questionnaire: Annual Request to Maryland DOT for Project Funding

Please provide the following information for each major capital project priority identified

- 1) **Name of Project:** Baltimore Washington Pky (BWP, MD 295): MD 100 to I-195
- 2) **Submitting Jurisdiction:** Anne Arundel County
- 3) **Location of the project (describe project limits and location, attach map if available and applicable):** I-195 at BWI to MD 100 meeting existing six lane section, plus Hanover Road extension from Howard County to MD 170 at BWI.
- 4) **Anticipated cost and funding source (approximate if available):** \$277 Million (Federal/State)
- 5) **Description of project purpose and need (up to one paragraph):** Project has completed EA/FONSI with detailed purpose and need approved by FHWA and with concurrence of State and Federal resource agencies including FAA. Project is necessary to increase capacity and provide lane continuity between Baltimore City and County with BWI-Thurgood Marshall, Arundel Mills, Fort Meade/NSA/National Business Park employment centers combining approximately 100,000 jobs in the forecast. The project also provides a new interchange with BWP (MD 295) permitting direct access to a major facility by BWI and its rental car facility promoting the airport's claim to be "...easy come...easy go...". Additionally, the County is partnering with two private sector developers to design, acquire right-of-way and construct a segment of Hanover Road from Ridge Road to Stoney Run Road thus creating the opportunity for a break out or follow on project.
- 6) **Is the project contained within the local Metropolitan Planning Organization's fiscally constrained long-range transportation plan?** Yes No **Project located outside of MPD boundaries:** NO
- 7) **Is the project consistent with the local land use plans?** Yes No **Describe specifics on how the project supports the local land use plan goals, objectives and/or policies:** Project is identified in adopted County Plans as a six-lane freeway facility (BWP, MD 295) with an interchange at Hanover Road, a four-lane principle arterial providing a direct connection between BWP and BWI improving access to a major State transportation asset.
- 8) **In county priority letter?** Yes No
- 9) **Smart Growth status and explanation:** Project is located within a PFA, supports existing and planned commercial development located at and around BWI, a major State transportation facility.

10) Please indicate which of the following Maryland Transportation Plan goals and objectives are served by the requested project investment (mark each goal served by the project and relevant objectives within each goal)

Goal: Quality of Service. Enhance users' access to, and positive experience with, all MDOT transportation services.

Objective: Enhance customer service and experience.

Objective: Provide reliable and predictable travel time across modal options for people and goods.

Objective: Facilitate coordination and collaboration with agency partners and stakeholders.

If checked, please describe how the project supports the goal and objectives: Project provides a consistent six-lane freeway section between Baltimore City and Fort Meade (MD 175) supporting planned employment and residential concentrations in Central Maryland. Lane continuity will reduce recurring congestion, improve travel times and reliability and reduce crash potential. It will also enhance access to BWI which is the State's major airport and an important transportation asset.

Goal: Safety and Security: Provide transportation assets that maximize personal safety and security in all situations.

Objective: Reduce the number and rate of transportation related fatalities and injuries.

Objective: Secure transportation assets for the movement of people and goods.

Objective: Coordinate and refine emergency response plans and activities.

If checked, please describe how the project supports the goal and objectives: See responses above. BWI, Maryland's Port in Baltimore and the associated light industrial-warehousing development located around BWI require efficient access, lane continuity, and elimination of recurring congestion both for the movement of goods as well as the accessibility to these facilities and concentrations of employment. Lane availability and continuity promotes emergency response as necessary to the airport and to Fort Meade, a high value target.

Goal: System Preservation and Performance: Protect Maryland's investment in its transportation system through strategies to preserve existing assets and maximize the efficient use of resources and infrastructure.

Objective: Preserve and maintain the existing transportation network.

Objective: Maximize operational performance and efficiency of existing systems.

If checked, please describe how the project supports the goal and objectives: Project will provide construction of additional north-south travel lanes along MD 295 connecting with prior construction above I-195 and south of MD 100 providing for lane continuity. It will also add an interchange at

Hanover Road and widen and connect the Hanover Road alignment between Howard County and BWI providing access to the Consolidated Rental Car Facility and other airport operations including the Mid-Field Cargo Facility. These improvement will increase the efficiency of facilities previously constructed and presently maintained by both the State and the County and will increase accessibility to BWI making it more regionally competitive in the future.

Goal: Environmental Stewardship: Develop transportation policies and initiatives that protect the natural, community, and historic resources of the State and encourage development in areas that are best able to support growth.

Objective: Coordinate land use and transportation planning to better promote Smart Growth.

Objective: Preserve and enhance Maryland's natural, community, and historic resources.

Objective: Support initiatives that further our commitments to environmental quality.

If checked, please describe how the project supports the goal and objectives: Project's impacts are almost all limited to areas where the facility already exists. The EA/FONSI has received approval from the FHWA and the FAA along with the concurrence of State and Federal resource agencies.

Goal: Connectivity for Daily Life: Support continued economic growth in the State through strategic investments in a balanced, multimodal transportation system.

Objective: Provide balanced, seamless, and accessible multimodal transportation options for people and goods.

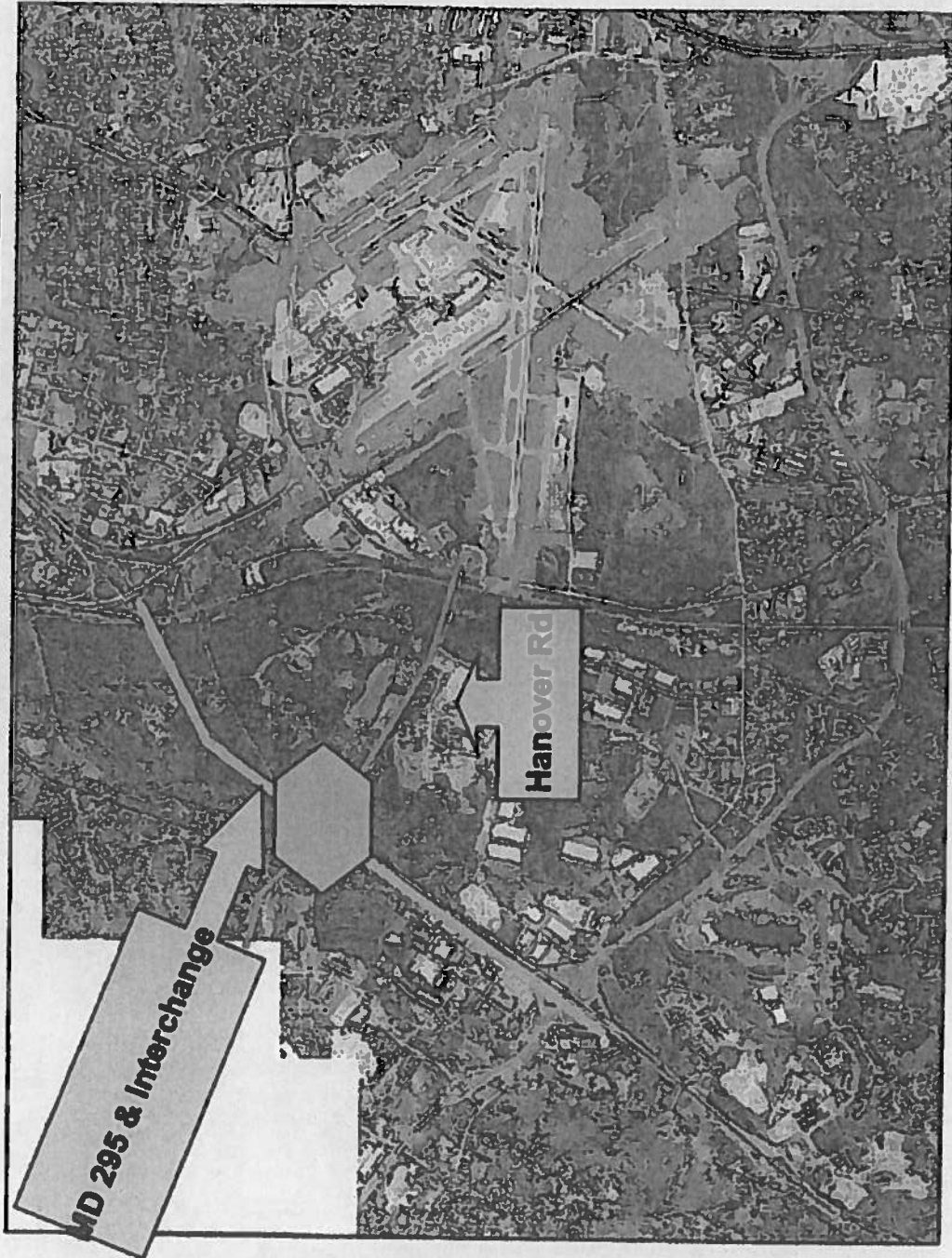
Objective: Facilitate linkages within and beyond Maryland to support a healthy economy.

Objective: Strategically expand network capacity to manage growth.

If checked, please describe how the project supports the goal and objectives: See responses above. Project will increase capacity to the network serving BWI and area employment supporting activities at BWI, Fort Meade and Arundel Mills, combining for more than 100,000 jobs in the forecast and more than 70,000 jobs today. Project is located within PFA and helps to create more accessible and efficient network in Central Maryland connecting Baltimore City and County to large concentrations of employment and residential development.

11) Additional Comments/Explanation: Project has been identified in previous priority letters. It has the support the community, of the MAA and of area employers.

MD 295: I-195 to MD 100 plus Hanover Rd



MD 295 & Interchange

Hanover Rd

Project Questionnaire: Annual Request to Maryland DOT for Project Funding

Please provide the following information for each major capital project priority identified

- 1) **Name of Project: Patuxent Freeway (MD 32): I-95 to Annapolis Road (MD 175)**
- 2) **Submitting Jurisdiction: Anne Arundel County**
- 3) **Location of the project (describe project limits and location, attach map if available and applicable): I-95 in Howard County to Annapolis Road (MD 175)**
- 4) **Anticipated cost and funding source (approximate if available): \$1.3 Billion**
- 5) **Description of project purpose and need (up to one paragraph): Project when constructed would provide more efficient connection between I-95 and Fort Meade/Odenton MARC station, reducing recurring congestion during peak periods and crash potential. The project could be a segment of a larger network of managed lanes providing opportunities for transit/vanpool/ridesharing strategies reducing east-west travel demand between the Penn Line (a major transit corridor), Fort Meade-National Security Agency-National Business Park (a major employment center of over 70,000 jobs presently) with Columbia and its employment concentrations.**
- 6) **Is the project contained within the local Metropolitan Planning Organization's fiscally constrained long-range transportation plan? Yes No Project located outside of MPO boundaries: NO**
- 7) **Is the project consistent with the local land use plans? Yes No Describe specifics on how the project supports the local land use plan goals, objectives and/or policies: Project increases capacity along an identified freeway facility in the adopted County Plan. MD 32 provides a continuous freeway connection between Fort Meade/NSA/National Business Park with other employment and residential concentrations in Odenton (an adopted TOD by MDOT) and Columbia.**
- 8) **In county priority letter? Yes No**
- 9) **Smart Growth status and explanation: In PFA. See responses above regarding compatibility with adopted Plans and policies of both the County and the State.**
- 10) **Please indicate which of the following Maryland Transportation Plan goals and objectives are served by the requested project investment (mark each goal served by the project and relevant objectives within each goal)**

Goal: Quality of Service. Enhance users' access to, and positive experience with, all MDOT transportation services.

1/25/2012

Objective: Enhance customer service and experience.

Objective: Provide reliable and predictable travel time across modal options for people and goods.

Objective: Facilitate coordination and collaboration with agency partners and stakeholders.

If checked, please describe how the project supports the goal and objectives: Project would increase capacity and offer opportunity to introduce managed lanes along with a future network of managed lanes creating a network for transit technologies such as express bus and BRT along with vanpool, subscription bus and other rideshare strategies connecting major employment areas with major residential and commercial areas within Central Maryland as well as I-95.

Goal: Safety and Security: Provide transportation assets that maximize personal safety and security in all situations.

Objective: Reduce the number and rate of transportation related fatalities and injuries.

Objective: Secure transportation assets for the movement of people and goods.

Objective: Coordinate and refine emergency response plans and activities.

If checked, please describe how the project supports the goal and objectives: Project provides increased capacity, reduced crash potential, reduction in recurring congestion and connections between major employment, residential and commercial centers within Central Maryland along with the Penn and Camden Lines of the MARC system.

Goal: System Preservation and Performance: Protect Maryland's investment in its transportation system through strategies to preserve existing assets and maximize the efficient use of resources and infrastructure.

Objective: Preserve and maintain the existing transportation network.

Objective: Maximize operational performance and efficiency of existing systems.

If checked, please describe how the project supports the goal and objectives: MD 32 between I-95 and the Baltimore Washington Pky (BWP) was constructed to provide a more efficient connection between major employment concentrations and I-95. It was initially constructed as a CD system with the assumption of adding needed through lanes at later time. Current CD system is subject to recurring congestion due to density of interchanges thereby reducing the efficiency of the facility during peak demand periods. To better achieve the desired results of the initial construction, the additional through lanes are needed.

Goal: Environmental Stewardship: Develop transportation policies and initiatives that protect the natural, community, and historic resources of the State and encourage development in areas that are best able to support growth.

Objective: Coordinate land use and transportation planning to better promote Smart Growth.

Objective: Preserve and enhance Maryland's natural, community, and historic resources.

Objective: Support initiatives that further our commitments to environmental quality.

If checked, please describe how the project supports the goal and objectives: Project would construct capacity where it is most needed to support current and forecast travel demand rather than adding capacity in a new location creating the potential for land use changes away from the present corridor.

Goal: Connectivity for Daily Life: Support continued economic growth in the State through strategic investments in a balanced, multimodal transportation system.

Objective: Provide balanced, seamless, and accessible multimodal transportation options for people and goods.

Objective: Facilitate linkages within and beyond Maryland to support a healthy economy.

Objective: Strategically expand network capacity to manage growth.

If checked, please describe how the project supports the goal and objectives: See responses above regarding intermodal connectivity (I-95, Camden, Penn Line MARC, BWP) and accessibility to major employment and residential centers within Central Maryland. It provides greater parallel capacity reducing demand along MD 175 between I-95 and BWP and, through better routeing, reducing heavy truck intrusion into existing neighborhoods along MD 175

11) Additional Comments/Explanation: Need for the project was identified in the FEIS for Campus Development at Fort Meade which will permit construction of additional facilities to support an increase in 6500 direct personnel along with contractors for NSA and US Cyber Command. Project was previously requested in prior Construction Priority Letters.

MD 32: I-95 to MD 175

